

Atherogenic Lipids and Lipoproteins Trigger CD36-TLR2-Dependent Apoptosis in Macrophages Undergoing Endoplasmic Reticulum Stress

Tracie A. Seimon,¹ Marissa J. Nadolski,¹ Xianghai Liao,¹ Jorge Magallon,¹ Matthew Nguyen,¹ Nicole T. Feric,⁴ Marlys L. Koschinsky,⁴ Richard Harkewicz,^{5,6} Joseph L. Witztum,^{5,6} Sotirios Tsimikas,^{5,6} Douglas Golenbock,⁷ Kathryn J. Moore,⁸ and Ira Tabas^{1,2,3,*}

¹Department of Medicine

²Department of Anatomy and Cell Biology

³Department of Physiology and Cellular Biophysics
Columbia University, New York, NY 10032, USA

⁴Department of Chemistry and Biochemistry, University of Windsor, Windsor, Ontario N9B 3P4, Canada

⁵Division of Endocrinology and Metabolism

⁶Division of Cardiology

University of California, San Diego, La Jolla, CA 92093, USA

⁷Department of Medicine, University of Massachusetts Medical School, Worcester, MA 01605, USA

⁸Leon H. Charney Division of Cardiology, Marc and Ruti Bell Program in Vascular Biology and Disease, New York University School of Medicine, New York, NY 10016, USA

*Correspondence: iat1@columbia.edu

DOI 10.1016/j.cmet.2010.09.010

SUMMARY

Macrophage apoptosis in advanced atheromata, a key process in plaque necrosis, involves the combination of ER stress with other proapoptotic stimuli. We show here that oxidized phospholipids, oxidized LDL, saturated fatty acids (SFAs), and lipoprotein(a) trigger apoptosis in ER-stressed macrophages through a mechanism requiring both CD36 and Toll-like receptor 2 (TLR2). In vivo, macrophage apoptosis was induced in SFA-fed, ER-stressed wild-type but not *Cd36*^{-/-} or *Tlr2*^{-/-} mice. For atherosclerosis, we combined TLR2 deficiency with that of TLR4, which can also promote apoptosis in ER-stressed macrophages. Advanced lesions of fat-fed *Ldlr*^{-/-} mice transplanted with *Tlr4*^{-/-}*Tlr2*^{-/-} bone marrow were markedly protected from macrophage apoptosis and plaque necrosis compared with WT → *Ldlr*^{-/-} lesions. These findings provide insight into how atherogenic lipoproteins trigger macrophage apoptosis in the setting of ER stress and how TLR activation might promote macrophage apoptosis and plaque necrosis in advanced atherosclerosis.

INTRODUCTION

Atherothrombotic vascular disease is the leading cause of death in the industrialized world, and its prevalence is increasing worldwide (Braunwald, 1997; Lloyd-Jones et al., 2010). The key clinico-pathologic event is the conversion of a relatively small percentage of subclinical atherosclerotic lesions to necrotic,

disrupted, “vulnerable” plaques that trigger acute luminal thrombosis (Libby, 2000; Virmani et al., 2003). Thus, understanding the cellular and molecular factors that lead to this conversion is a key goal in our attempt to understand and identify potential therapeutic targets for this disease. Importantly, lesion size per se is not a parameter associated with conversion (Libby, 2000). Rather, the plaque morphology properties of intimal necrosis, cellular apoptosis, and fibrous cap thinning appear to be most important (Libby, 2000; Virmani et al., 2003). Thus, factors that promote these particular features will likely give important clues to how plaques progress to the clinical stage.

Plaque necrosis is a key feature of clinically dangerous lesions because it promotes inflammation, fibrous cap thinning, plaque destabilization, and thrombosis (Libby, 2000; Virmani et al., 2003). Plaque necrosis forms through the combination of lesional macrophage apoptosis and defective phagocytic clearance of the apoptotic cells, which leads to postapoptotic cellular necrosis (Tabas, 2005). Work in our laboratory and others has provided evidence that advanced lesional macrophage apoptosis is enabled through endoplasmic reticulum (ER) stress, acting through the unfolded protein response (UPR) effector CHOP (Feng et al., 2003; Thorp et al., 2009). For example, there is a close positive correlation among CHOP expression, apoptosis of lesional cells, and progression of plaques to the vulnerable stage in human coronary arteries (Myoishi et al., 2007), and studies with CHOP-deficient mice show that CHOP contributes to advanced lesional apoptosis and plaque necrosis in both fat-fed *Ldlr*^{-/-} and *ApoE*^{-/-} mice (Thorp et al., 2009).

Although extreme ER stress in vitro can directly cause cell death, ER stress at the more subtle levels that occur in vivo is unlikely to trigger apoptosis by itself. Rather, ER stress renders macrophages susceptible to apoptosis in the face of other proapoptotic stimuli (Devries-Seimon et al., 2005; Seimon et al., 2006; Manning-Tobin et al., 2009). Therefore, understanding

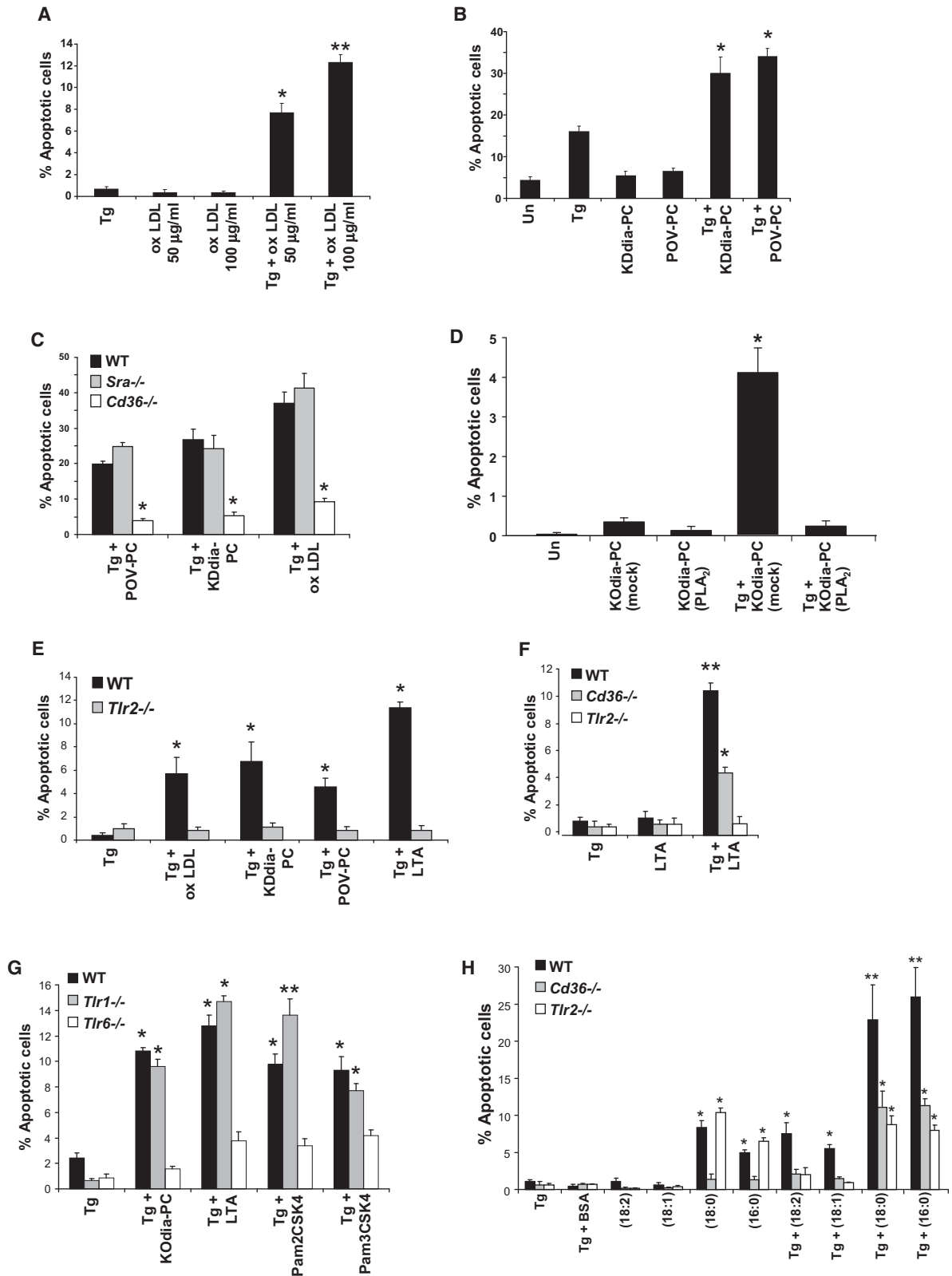


Figure 1. OxPLs, OxLDL, and Saturated Fatty Acids Induce CD36- and TLR2/6-Dependent Apoptosis in ER-Stressed Macrophages

(A) Macrophages were incubated for 28 hr with 0.25 µM thapsigargin (Tg) alone or thapsigargin in combination with the indicated concentrations of oxLDL. (B) Macrophages were left untreated (Un) or incubated for 30 hr with 0.25 µM thapsigargin alone or thapsigargin in combination with 10 µg/ml KDdia-PC or POV-PC or the phospholipids alone.

which athero-relevant stimuli conspire with ER stress to cause advanced lesional macrophage apoptosis and plaque necrosis and the mechanism of their action is a key goal in deciphering the cellular biology of vulnerable plaque formation. In that context, we show here that a number of lipids and lipoproteins associated with atherosclerotic disease are potent inducers of apoptosis in ER-stressed macrophages through a pathway involving CD36, TLR2, NADPH oxidase, and oxidative stress. While CD36 and TLRs have been implicated previously in early atherogenesis, e.g., in foam cell formation and endothelial activation (Park et al., 2009; Mullick et al., 2008), their role in specific cellular processes related to the critical and distinct process of plaque necrosis is not known. Moreover, one of the lipoproteins that we found to activate the CD36-TLR2 apoptosis pathway is lipoprotein(a) (Lp(a)). Lp(a) is a well-recognized risk factor for coronary artery disease (CAD) and has recently been shown to be strongly linked genetically to CAD (Erqou et al., 2009; Tré-gouët et al., 2009; Brazier et al., 1999; Holmer et al., 2003), but how Lp(a) might be linked to one or more cellular events specifically involved in advanced plaque progression is uncertain. These findings may provide insight into how Lp(a) contributes to atherothrombotic vascular disease.

RESULTS

Oxidized Phospholipids Trigger CD36-Dependent Apoptosis in ER-Stressed Macrophages

To discover athero-relevant triggers of apoptosis in ER-stressed macrophages, we investigated ligands for CD36, which we recently showed plays a role in plaque necrosis (Manning-Tobin et al., 2009). To determine whether CD36 ligands trigger macrophage apoptosis under conditions of ER stress, we treated primary mouse peritoneal macrophages with the ER stress-inducing agent thapsigargin, alone or in the presence of oxLDL, a CD36 ligand (Endemann et al., 1993). Whereas oxLDL or thapsigargin alone had little effect, both reagents together synergistically induced apoptosis (Figure 1A). To test if oxidized phospholipids (oxPLs), which are atherosclerosis-relevant CD36 ligands present in oxLDL, also triggered macrophage apoptosis during ER stress, we incubated macrophages with two types of oxPLs found in oxLDL, KDdia-PC and POV-PC (Podrez et al., 2002). As shown in Figure 1B, while KDdia-PC or POV-PC alone had no significant effect, they synergistically triggered macrophage apoptosis when combined with thapsigargin. Similar results were observed when ER-stressed macrophages were

incubated with two other oxPLs, KOdia-PC and oxidized PAPC (below), and apoptosis was also observed when human macrophages derived from THP1 cells were exposed to KOdia-PC and thapsigargin (Figure S1A). OxPL-induced apoptosis in ER-stressed macrophages was dependent on CD36 but not the type A scavenger receptor (SRA), as shown by experiments using macrophages from wild-type (WT), *Sra*^{-/-}, and *Cd36*^{-/-} mice (Figure 1C). In a parallel experiment, we found that SRA deficiency did block apoptosis induced by thapsigargin plus the SRA ligand AcLDL (data not shown) (Devries-Seimon et al., 2005).

ER stress and induction of the UPR occurs in macrophages of atherosclerotic plaques in humans and mice (Feng et al., 2003; Zhou et al., 2005; Gargalovic et al., 2006; Thorp et al., 2009; Myoishi et al., 2007). Although the cause of ER stress in vivo is unknown, substances such as peroxynitrite and 7-ketocholesterol have been shown to accumulate in atherosclerotic plaque and are known inducers of ER stress (Dickhout et al., 2005; Pedruzzi et al., 2004; Myoishi et al., 2007). We therefore tested whether oxPLs could trigger apoptosis when combined with peroxynitrite and 7-ketocholesterol. As shown in Figure S1B, 7-ketocholesterol and SIN-1, a peroxynitrite donor, were poor inducers of macrophage apoptosis when given at low concentrations. However, the addition of KDdia-PC to either of these ER stress-inducing agents resulted in a marked increase in macrophage apoptosis. These results indicate that oxPLs can trigger apoptosis in macrophages exposed to various types of ER stressors, including those that may be relevant to advanced atheromata.

CD36-mediated internalization of oxLDL and the bacterial product LTA are dependent on the molecule dynamin, a GTPase that mediates the constriction of clathrin-coated pits (Sun et al., 2007; Nilsen et al., 2008). To test the role of dynamin in CD36-dependent macrophage apoptosis, macrophages were transduced with adenovirus carrying dominant-negative dynamin (DN-dyn) or lacZ as a negative control. The effectiveness of DN-dyn was demonstrated by its ability to block labeled oxLDL uptake by >90% compared to cells transduced with lacZ control (data not shown). DN-dyn completely protected macrophages from apoptosis induced by oxLDL and thapsigargin, KOdia-PC and thapsigargin, or KOdia-PC and 7-ketocholesterol (Figure S1C). Note that DN-dyn did not block the small but statistically significant increase in apoptosis induced by 7-ketocholesterol alone, demonstrating that this construct is not a general inhibitor of apoptosis. These results suggest that CD36 ligands

(C) Macrophages from WT, *Sra*^{-/-}, or *Cd36*^{-/-} mice were incubated for 18 hr with thapsigargin alone or thapsigargin in combination with 10 μg/ml POV-PC or KDdia-PC or with 50 μg/ml oxLDL.

(D) Macrophages were left untreated or incubated for 23 hr with 50 μg/ml KOdia-PC without (mock) or with (PLA₂) pretreatment with phospholipase A₂, alone or in combination with 0.5 μM thapsigargin (Tg).

(E) Macrophages from WT or *Tlr2*^{-/-} mice were incubated for 30 hr with 0.25 μM thapsigargin alone or thapsigargin combined with KDdia-PC, POV-PC, oxLDL, or LTA.

(F) Macrophages from WT, *Cd36*^{-/-}, or *Tlr2*^{-/-} mice were incubated for 24 hr with thapsigargin alone or thapsigargin combined with 10 μg/ml LTA.

(G) Macrophages from WT, *Tlr1*^{-/-}, or *Tlr6*^{-/-} mice were incubated for 24 hr with thapsigargin with or without KOdia-PC, LTA, or 10 μg/ml Pam3CSK4 or Pam2CSK4.

(H) Macrophages from WT, *Cd36*^{-/-}, or *Tlr2*^{-/-} mice were incubated for 18 hr with 0.25 μM thapsigargin (Tg) alone, 0.25 mM of the indicated fatty acids in complex with BSA, or thapsigargin plus either the fatty acids or BSA control. The unsaturated fatty acids were linoleic acid (18:2) and oleic acid (18:1), and the saturated fatty acids were stearic acid (18:0) and palmitic acid (16:0). For all experiments described, the experimental endpoint was macrophage apoptosis; the data are expressed as the percent of total cells that stained with annexin V and propidium iodide (mean ± SEM; n = 4). Differences between values with symbols and no symbols or between values with different symbols are statistically significant (p values ranged from <0.05 to <0.001).

must be internalized, as opposed to functioning solely at the cell surface, to trigger apoptosis in ER-stressed macrophages.

The Proapoptotic Effect of OxPLs Requires the *sn2* Oxidized Fatty Acid

Both the phosphocholine head group and the *sn2* fatty acid in oxPLs are recognized by CD36 (Boullier et al., 2005; Greenberg et al., 2008). We therefore tested the effect of removing each of these two groups. Removal of phosphocholine with phospholipase D (PLD), which went to >92% completion as assessed by HPLC-MS analysis, had no effect on the ability of the oxPL to induce apoptosis in ER-stressed macrophages (Figures S1D and S1E). In contrast, treatment of KOdia-PC with phospholipase A₂ (PLA₂), which cleaves the *sn2* fatty acyl moiety of PLs, almost completely suppressed its ability to trigger apoptosis in ER-stressed macrophages (Figure 1D). Moreover, whereas oxidized PAPC induced apoptosis in these cells, nonoxidized PAPC did not (Figure S1F). These results indicate that the proapoptotic effect of oxPLs requires the *sn2* oxidized fatty acid and not the phosphocholine head group.

TLR2 Is Necessary for Apoptosis Induced by CD36 Ligands in ER-Stressed Macrophages

Different classes of pattern recognition receptors can participate in cooperative interactions, and previous work has shown that CD36-TLR2 interaction participates in the response to *Staphylococcus aureus* infection (Stuart et al., 2005; Hoebe et al., 2005). To test the role of TLR2 in CD36-induced apoptosis in ER-stressed macrophages, we conducted a series of experiments comparing macrophages from WT and *Tlr2*^{-/-} mice. As shown in Figure 1E, TLR2 deficiency markedly protected ER-stressed macrophages from oxLDL-, POV-PC-, and KDdia-PC-induced apoptosis. Moreover, lipoteichoic acid (LTA), a staphylococcal lipid that activates TLR2 in a CD36-dependent manner (Stuart et al., 2005; Hoebe et al., 2005), also induced apoptosis in ER-stressed WT macrophages, but not in *Tlr2*^{-/-} or *Cd36*^{-/-} macrophages and not in the absence of ER stress (Figures 1E and 1F). *Tlr4*^{-/-} macrophages exposed to KDdia-PC, POV-PC, and oxLDL in combination with thapsigargin showed levels of apoptosis similar to those of WT macrophages (data not shown). These results demonstrate that TLR2, but not TLR4, contributes to apoptosis induced by CD36 ligands during ER stress.

MyD88 is a signaling adaptor utilized by many of the TLRs and is considered a primary adaptor for TLR2 (Kenny and O'Neill, 2008). To determine whether apoptosis in the CD36/TLR2/ER stress model was MyD88 dependent, WT and *Myd88*^{-/-} macrophages were incubated with the KOdia-PC, a CD36 oxPL ligand similar to KDdia-PC (Podrez et al., 2002), POV-PC, or LTA in combination with thapsigargin. As shown in Figure S1G, apoptosis induced by each of these ligands was markedly suppressed in MyD88-deficient macrophages. In contrast, apoptosis was not blocked in macrophages lacking the other TLR adaptor, TRIF (data not shown).

TLR2 has been shown to heterodimerize with either TLR1 or TLR6 to initiate signaling (Pålsson-McDermott and O'Neill, 2007). To determine the possible role of TLR1 and TLR6 in our model, macrophages from WT, *Tlr1*^{-/-}, or *Tlr6*^{-/-} mice were treated with thapsigargin alone or in combination with KOdia-PC and LTA (Figure 1G). We found that macrophage apoptosis

was highly dependent on TLR6, but not TLR1. We also compared the apoptosis-inducing potential of Pam3CSK4, a lipid that has been reported to be relatively specific for the TLR1/2 heterodimer, with Pam2CSK4, which is reported to activate the TLR2/6 heterodimer (Pålsson-McDermott and O'Neill, 2007). As expected, the latter ligand induced apoptosis in ER-stressed macrophages in a TLR2/6-dependent manner. Unexpectedly, Pam3CSK4 also induced apoptosis, and its effect was also blocked in TLR6-deficient but not TLR1-deficient macrophages. These combined data suggest that the active heterodimer in the CD36/ER stress apoptosis pathway is TLR2/6.

Saturated Fatty Acids Trigger CD36- and TLR2-Dependent Apoptosis during ER Stress

Although the *sn2* oxidized fatty acid in oxPLs is required for apoptosis (above), oxPLs and bacterial products such as LTA, Pam3CSK4, and Pam2CSK4 all have saturated fatty acid residues at the *sn1* and/or *sn2* position of the glycerol backbone. In addition to the role of CD36 in oxLDL uptake and cell signaling, the receptor also functions as a fatty acid transporter (Ibrahimi and Abumrad, 2002). Moreover, several studies have suggested that SFAs might activate TLR2- and TLR4-dependent signaling (Nguyen et al., 2007; Shi et al., 2006; Senn, 2006; Lee and Hwang, 2006), although this is not a consistent finding (Erridge and Samani, 2009). We therefore tested whether different types of fatty acids could trigger apoptosis in macrophages undergoing ER stress, and if so, whether such an effect was CD36 and/or TLR2 dependent. As shown in Figure 1H, oleic acid and linoleic acid did not trigger apoptosis when given alone. A small but significant increase in apoptosis was observed when these unsaturated fatty acids (UFAs), but not BSA carrier alone, were combined with thapsigargin. Moreover, this effect was suppressed in macrophages lacking either CD36 or TLR2. When the SFAs palmitic and stearic acids were given alone, apoptosis was induced, and this effect was dependent on CD36 but not TLR2. However, apoptosis by these fatty acids was increased markedly in the setting of thapsigargin-induced ER stress, and this increment was dependent on both CD36 and TLR2. Some studies (Miller et al., 2003; Oka et al., 1998; Hazzard and Ettinger, 1995), though not all (Erridge and Samani, 2009), have suggested that SFAs can also trigger certain TLR4-dependent signaling reactions. We found that palmitic acid-induced apoptosis was not blocked significantly in TLR4-deficient ER-stressed macrophages (data not shown). In summary, the combined CD36/TLR2 pathway of apoptosis plays a role in two scenarios of fatty acid-induced apoptosis: UFAs in ER-stressed macrophages and the *increment* in SFA-induced apoptosis in ER-stressed versus non-ER-stressed cells. Finally, we found that dipalmitoyl PC or dipalmitoyl glycerol, which have SFAs in both the *sn1* and *sn2* positions, can trigger apoptosis in ER-stressed macrophages (data not shown). These findings raise the possibility that SFAs in PLs, in the context of either an *sn2* oxidized fatty acid (above) or *sn1* and *sn2* SFAs, might play a role in the apoptotic response in ER-stressed macrophages.

Reactive Oxygen Species Contribute to Macrophage Apoptosis by CD36 Ligands during ER Stress

Reactive oxygen species (ROS) can contribute to apoptosis under physiologic and pathologic conditions (Li et al., 2009;

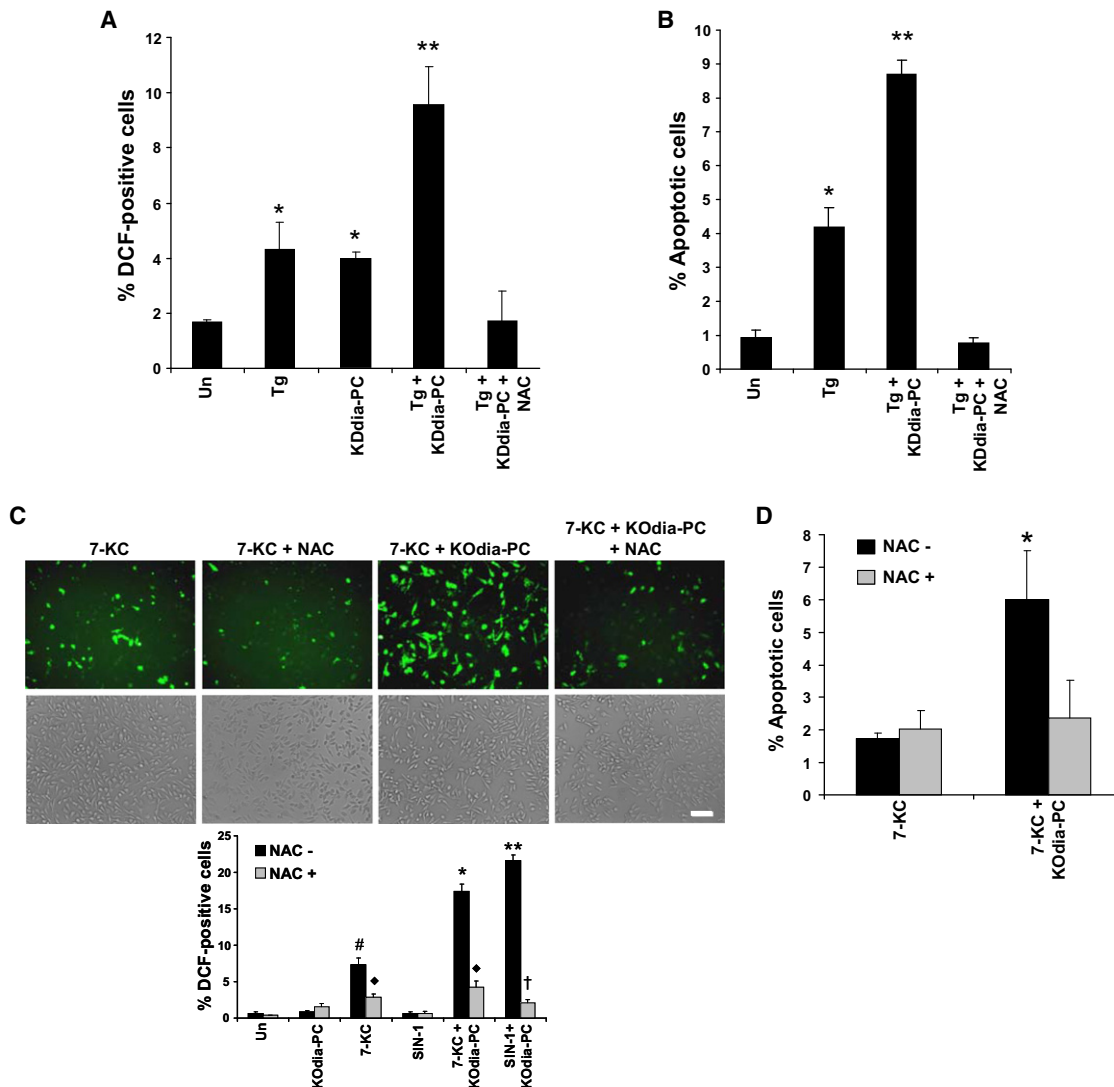


Figure 2. CD36 Ligand-Induced Apoptosis in ER-Stressed Macrophages Is Dependent on Reactive Oxygen Species

(A and B) Macrophages were preincubated for 60 min in the absence or presence of 100 μ M N-acetylcysteine (NAC) and then incubated for 24 hr in medium alone (Un) or containing 0.25 μ M thapsigargin (Tg), 20 μ g/ml KDdia-PC, or Tg and KDdia-PC, as indicated. The cells were then assayed for ROS, using the DCF fluorescence assay, and apoptosis.

(C and D) As above, but here the ER stressor was 5 μ g/ml 7-ketocholesterol or 2 mM SIN-1 instead of thapsigargin. Differences between values with symbols and no symbols or between values with different symbols are statistically significant (p values ranged from <0.05 to <0.01).

Simon et al., 2000), and a CD36-ROS pathway has been implicated in oxLDL-induced inactivation of SHP-2 phosphatase in macrophages (Park et al., 2009). We therefore tested whether ROS are generated by CD36 ligands during ER stress, and if so, whether this process plays a role in apoptosis. Treatment of cells with KDdia-PC, thapsigargin, SIN1, or 7-ketocholesterol alone resulted in a low level of 2',7'-dichlorofluorescein diacetate (DCF) staining, a measure of cellular oxidative stress (Frank et al., 2000) (Figures 2A and 2C). However, when the oxPLs Kodia-PC or KDdia-PC were combined with the ER stressors, DCF staining was substantially increased. Similar results were obtained when thapsigargin was combined with other TLR2 ligands, including LTA, Pam2CSK4, and Pam3CSK4 (data not shown). Furthermore, pretreatment of macrophages with the antioxidant N-ac-

tylcysteine (NAC) suppressed DCF staining and, most importantly, apoptosis under these conditions (Figures 2B and 2D). NAC also decreased apoptosis in response to palmitic acid plus thapsigargin (data not shown). Thus, ROS is an important component of the CD36/TLR2/ER stress pathway of apoptosis.

Lp(a) Triggers Apoptosis in ER-Stressed Macrophages in a CD36-TLR2-Oxidative Stress-Dependent Manner

Lp(a) is a modified LDL-like lipoprotein in which a kringle-containing protein called apolipoprotein(a) is covalently bound to apolipoprotein B of LDL (Koschinsky and Marcovina, 2004). Epidemiological and human genetic studies have shown that Lp(a) is a potent, independent risk factor for advanced atherosclerotic vascular disease. Moreover, in a transgenic rabbit

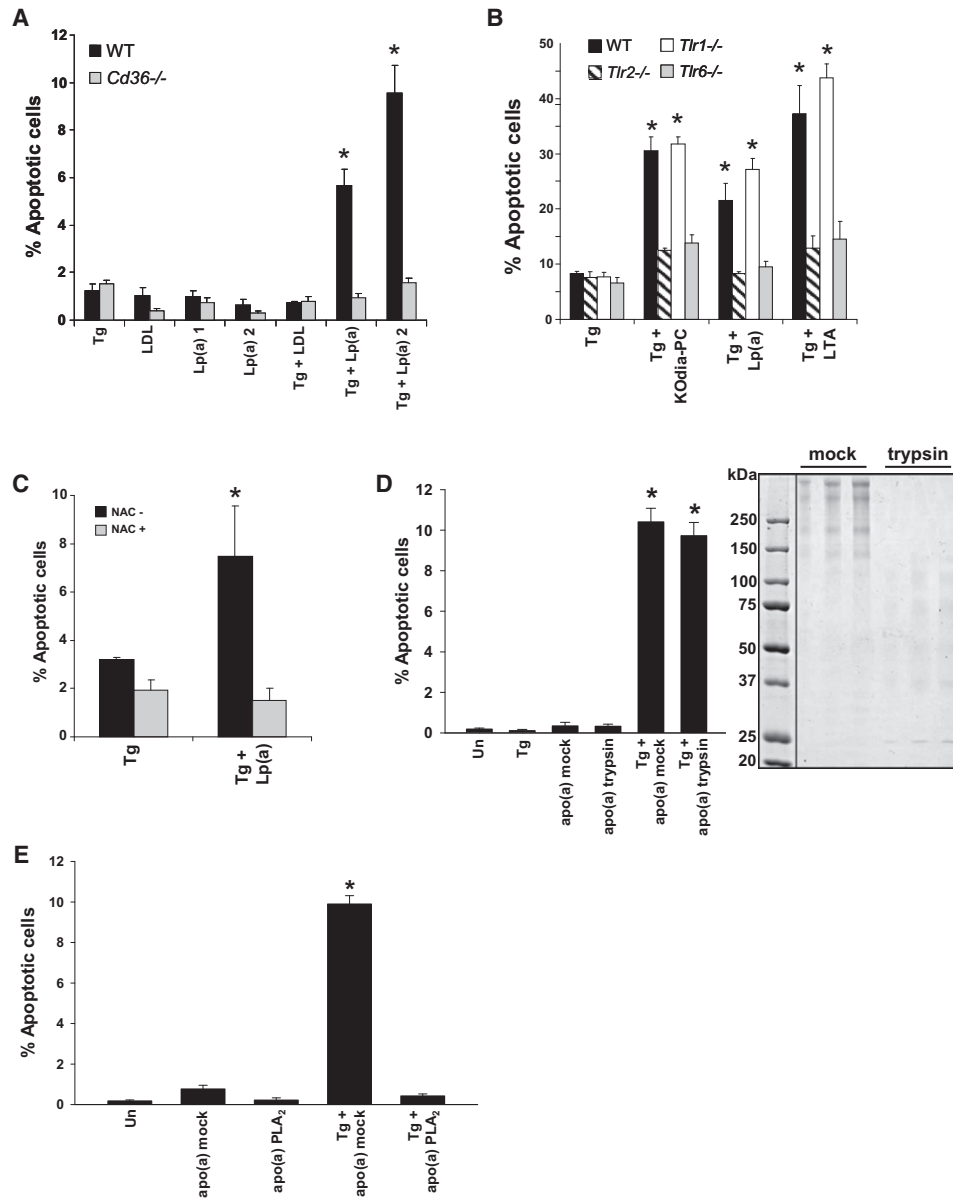


Figure 3. Lp(a) Triggers Apoptosis in ER-Stressed Macrophages in a CD36-TLR2-Oxidative Stress-Dependent Manner

(A and B) Macrophages from WT, *Cd36*^{-/-}, *Tlr2*^{-/-}, *Tlr1*^{-/-}, or *Tlr6*^{-/-} mice were incubated for 24 hr with 0.5 μM thapsigargin alone or in combination with 25 μg/ml LDL or Lp(a), 50 μg/ml KOdia-PC, or 10 μg/ml LTA.

(C) Apoptosis data for macrophages that were preincubated with or without 500 μM N-acetylcysteine (NAC) and then incubated for 24 hr with thapsigargin alone or with 50 μg/ml of Lp(a).

(D) Macrophages were assayed for apoptosis after incubation for 22 hr with thapsigargin alone or thapsigargin in combination with 25 μg/ml apo(a) that was pretreated in the absence (mock) or presence of trypsin. The image shows a Coomassie-stained SDS-PAGE of mock and trypsin-treated apo(a); for each condition, three different amounts of proteins were loaded per lane, increasing from left to right.

(E) As in (D), but here the apo(a) was treated with ±PLA₂ prior to trypsinization. *p < 0.01 compared to other groups without the asterisk.

model, modest plasma levels of Lp(a) (~15 mg/dl) markedly promoted plaque necrosis without affecting en face lesion area (Sun et al., 2002). However, a clear mechanism linking Lp(a) with a cellular event specifically associated with advanced plaque progression has been elusive (Trégouët et al., 2009; Brazier et al., 1999; Holmer et al., 2003; Erqou et al., 2009). In the context of the data herein, a potential clue to this mystery is the recent

finding that Lp(a) is a major carrier of oxPLs in human plasma (Bergmark et al., 2008). We therefore tested whether Lp(a) could trigger apoptosis in ER-stressed macrophages (Figure 3A). The Lp(a) was verified to contain oxPLs by anti-oxPL antibody (E06) reactivity (data not shown). As expected, neither LDL nor Lp(a) induced apoptosis when given alone. However, Lp(a) from two separate subjects, but not LDL, markedly induced

apoptosis when added in combination with thapsigargin. Moreover, apoptosis under these conditions was CD36 dependent. We then compared Lp(a) with KOdia-PC and LTA in ER-stressed macrophages from WT, *Tlr2*^{-/-}, *Tlr6*^{-/-}, or *Tlr1*^{-/-} mice to determine whether apoptosis induced by Lp(a) was also TLR dependent. As shown in Figure 3B, all ligands triggered apoptosis in a TLR2- and TLR6-dependent manner. Also similar to oxPL-induced apoptosis, Lp(a)-induced apoptosis in ER-stressed macrophages could be suppressed by NAC (Figure 3C).

The oxPLs of Lp(a) are found both in the lipid phase and covalently bound to apo(a) (Bergmark et al., 2008; Edelstein et al., 2003). The next series of studies was conducted using recombinant 17-kringle apo(a) (Feric et al., 2008), which contains oxPLs as assessed by both anti-oxPL antibody (E06) reactivity and mass spectrometry (data not shown). These oxPLs are presumably acquired during secretion from the protein-producing cells. We found that apo(a) was a potent inducer of apoptosis in ER-stressed macrophages (Figure 3D). To determine whether apoptosis depended on an intact apo(a) protein, apo(a) was subjected to digestion with trypsin or mock treatment in buffer alone. Trypsin treatment led to extensive digestion of apo(a), which normally migrates between ~250 and 500 kDa, depending on the level of glycosylation (Koschinsky et al., 1991) (Figure 3D, gel image). The apoptosis data in Figure 3D show that the trypsin-treated protein had the same level of proapoptotic activity as the mock-treated protein, consistent with a role for apo(a)-associated lipids.

To gain further evidence that oxPLs on apo(a) are necessary for its proapoptotic activity, the apo(a) preparation was treated with PLA₂ or buffer alone (mock). Because oxPLs are bound covalently to apo(a) through the *sn*2 oxidized fatty acyl moiety (Edelstein et al., 2003), PLA₂ hydrolysis would be expected to release the lipids from the protein as lysoPC. After treatment, the apo(a)-PLA₂ (or mock) reaction mixture was subjected to trypsin treatment to avoid an effect of the PLA₂ on the cells. As shown in Figure 3E, PLA₂ treatment completely abrogated apo(a)-induced apoptosis in ER-stressed macrophages, further supporting a role for apo(a)-associated phospholipids in the apoptotic response. In summary, oxPL-containing Lp(a) and apo(a) are potent inducers of macrophage apoptosis in the setting of ER stress. The mechanism, like that of oxPL, involves CD36, TLR2, TLR6, and oxidative stress in the macrophages.

NOX2 Is Necessary for the Generation of ROS and Apoptosis by CD36 Ligands during ER Stress

To determine whether NADPH oxidase could be a source of ROS and involved in apoptosis in ER-stressed macrophages exposed to CD36 ligands, we compared macrophages from WT mice with those from mice lacking TLR2, CD36, or the macrophage NADPH oxidase subunit NOX2. Time course analysis revealed that DCF staining increased after 1 hr of KOdia-PC/thapsigargin treatment, peaked at 4 hr, dropped slightly between 4 and 8 hr, and then remained at this level for the next 16 hr (Figure 4A). However, NOX2-, TLR2-, and CD36-deficient macrophages showed suppressed DCF staining throughout the entire time course. Most importantly, apoptosis was suppressed in NOX2-deficient macrophages treated with palmitic acid, KOdia-PC, or LTA in combination with thapsigargin (Figure 4B). Similar results were found when the combination of KOdia-PC and

either 7-ketocholesterol or SIN-1 was used (data not shown). Thus, CD36 ligands promote ROS accumulation in ER-stressed macrophages in a CD36-, TLR2-, and NOX2-dependent manner, and both ROS and NOX2 are necessary for the full apoptotic response in this setting.

During NADPH oxidase activation, p47phox is recruited to membranes as part of the assembly of the NADPH oxidase complex. This process causes “clustering” of p47 at the plasma membrane or endocytic/phagocytic compartment (Laroux et al., 2005). While p47phox is localized diffusely in unstimulated cells, treatment with KOdia-PC for 4 hr led to an increase of p47phox clustering (Figure 4C). Interestingly, p47 appeared to cluster in regions that stained with LysoTracker Green, suggesting assembly on acidic organelles such as lysosomes. After 8 hr, the percentage of cells exhibiting p47phox clustering in response to KOdia-PC alone dropped significantly (Figure 4D). Cells treated with KOdia-PC in combination with thapsigargin also exhibited an increase in p47phox clustering, but in this case clustering was sustained and did not diminish by 8 hr. The combination of KOdia-PC with SIN-1 or 7-ketocholesterol also led to sustained clustering of p47phox (data not shown). Thapsigargin alone did not induce p47phox clustering at any of the time points examined. As a positive control, macrophages were treated for 30 min with 500 ng/ml LPS to induce clustering (Figures 4C and 4D). Thus, while KOdia-PC alone induces transient clustering of p47phox within acidic compartments, the addition of an ER stressor causes sustained p47phox clustering, consistent with sustained ROS production under these conditions.

TLR2-Dependent ERK Activation Is Necessary for Apoptosis, p47phox Clustering, and ROS Production

Several kinases, such as PKC, ERK, and c-Src, have been implicated in promoting p47 phosphorylation and NADPH oxidase activation (Dewas et al., 2000; Touyz et al., 2003; Bey et al., 2004). We therefore screened a variety of inhibitors for their ability to suppress apoptosis in ER-stressed macrophages exposed to CD36 ligands. We found that the conventional PKC inhibitor Go6976, the pan-PKC inhibitor Go6983, and the Src inhibitor PP2 had no effect on apoptosis. In contrast, PD98058, which inhibits MEK1 and its downstream substrate ERK, completely suppressed apoptosis induced by KOdia-PC or LTA in combination with thapsigargin (Figure 5A). Although ERK has been shown to promote cell survival in other models of ER stress (Hu et al., 2004), these data and others (Sim et al., 2005) suggest that ERK can mediate apoptosis in ER-stressed macrophages exposed to CD36 ligands. To directly demonstrate the concept of context-dependent effects of ERK inhibition, we treated macrophages with a dose of 7-ketocholesterol that induces apoptosis in the absence of a CD36 ligand (Figure 5A). We found that macrophages treated with the ERK inhibitor were markedly more susceptible to apoptosis in this scenario, demonstrating that ERK functions as a survival kinase in an ER stress model that does not involve CD36.

To determine whether ERK plays a role in NADPH oxidase activation and ROS production, macrophages were exposed to KOdia-PC or LTA in combination with thapsigargin, with or without treatment with PD98058. The ERK inhibitor markedly suppressed DCF staining induced by KOdia-PC or LTA during ER stress (Figure 5B). Similar results were found when

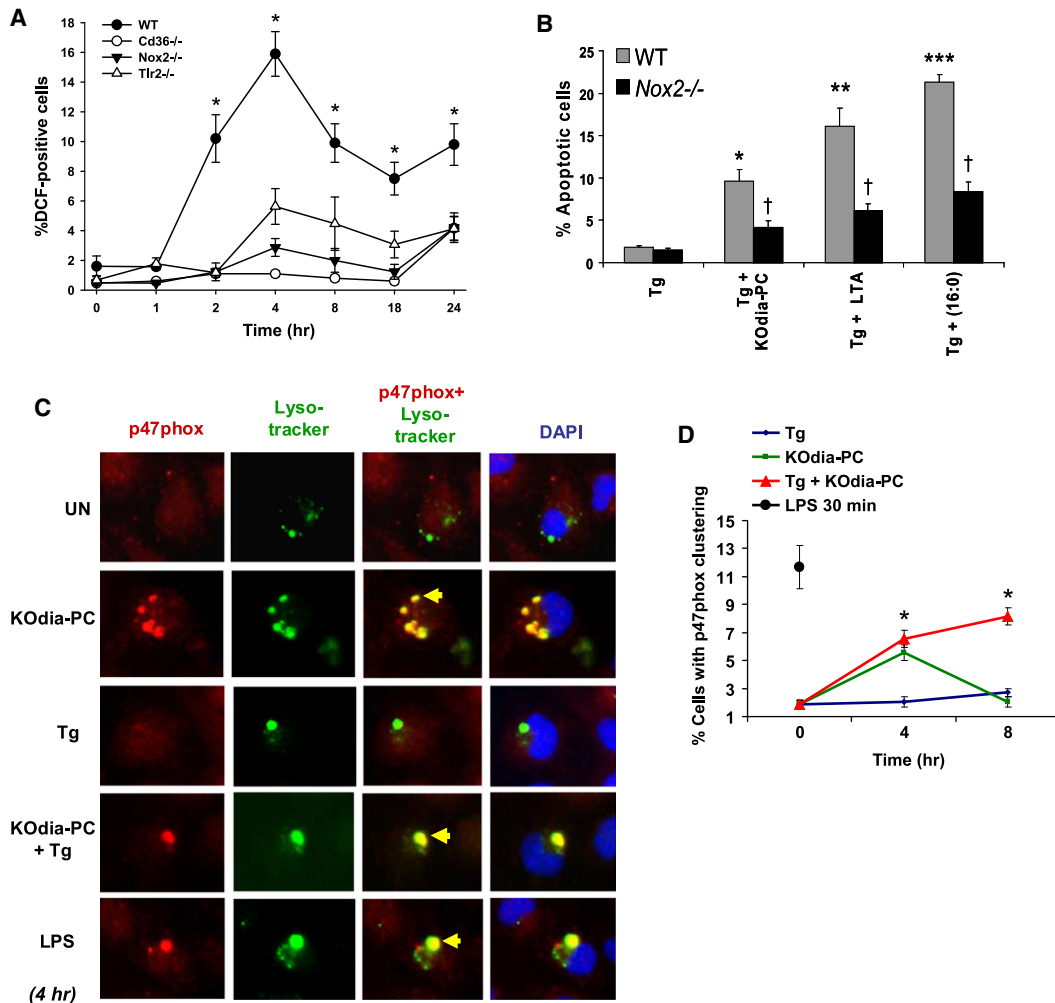


Figure 4. Sustained Activation of NADPH Oxidase by CD36 Ligands in ER-Stressed Macrophages

(A) Macrophages from WT, *Cd36*^{-/-}, *Nox2*^{-/-}, or *Tlr2*^{-/-} mice were incubated for the indicated times with 0.25 μ M thapsigargin (Tg) alone or in combination with 20 μ g/ml POV-PC and then assayed for the percent of DCF-positive cells (ROS).

(B) Macrophages from WT or *Nox2*^{-/-} mice were incubated for 24 hr with thapsigargin alone or in combination with KOdia-PC, 10 μ g/ml LTA, or 0.25 mM palmitic acid (PA). The cells were then assayed for apoptosis.

(C) Macrophages were incubated for 4 hr in medium alone or medium containing KOdia-PC, thapsigargin, or the two reagents combined and then subjected to immunofluorescence for p47^{phox} (red) and labeling with LysoTracker Green and the nuclear stain DAPI (blue). Treatment with LPS for 30 min was used as a positive control. Bar, 5 μ m.

(D) Quantification of the data at two time points for the experiment in (C), expressed as the percent of total cells that exhibited p47 clustering (mean \pm SEM, n = 4). Differences between values with symbols and no symbols or between values with different symbols are statistically significant (p < 0.05).

p47^{phox} clustering was assayed (Figure 5C). Moreover, KOdia-PC promoted ERK phosphorylation, a measure of its activation, in two phases, peaking at 30 min and 18–24 hr, respectively (Figure 5D). The latter phase was partially dependent on TLR2, but not on NOX2 (Figures 5D and 5E). Taken together, these results are consistent with a model in which ERK is activated downstream of TLR2, leading to p47 translocation and NADPH oxidase activation.

SFAs Trigger CD36 and TLR2-Dependent Apoptosis in Macrophages Undergoing ER Stress In Vivo

To test the relevance of the CD36-ER stress apoptosis pathway in vivo, we compared chow-fed mice with mice fed a diet con-

taining 3.3% cocoa butter, which is rich in stearic and palmitic acids. After 2 weeks on the diet, the mice were given an intraperitoneal (i.p.) injection of concanavalin A to recruit macrophages to the peritoneal cavity. Two days later, the mice were given another i.p. injection of 0.4 mg/kg of thapsigargin dissolved in 150 mM dextrose or, as a control, dextrose vehicle alone. After 24 hr, freshly isolated peritoneal macrophages were assayed for apoptosis. As shown in Figure 6A, macrophages from mice fed the SFA diet and subsequently given vehicle control had very little apoptosis. Similar results were seen when mice were fed a regular chow diet for 2 weeks, followed by an i.p. injection of thapsigargin. In contrast, there was a marked increase in apoptosis in macrophages isolated from mice fed the SFA diet

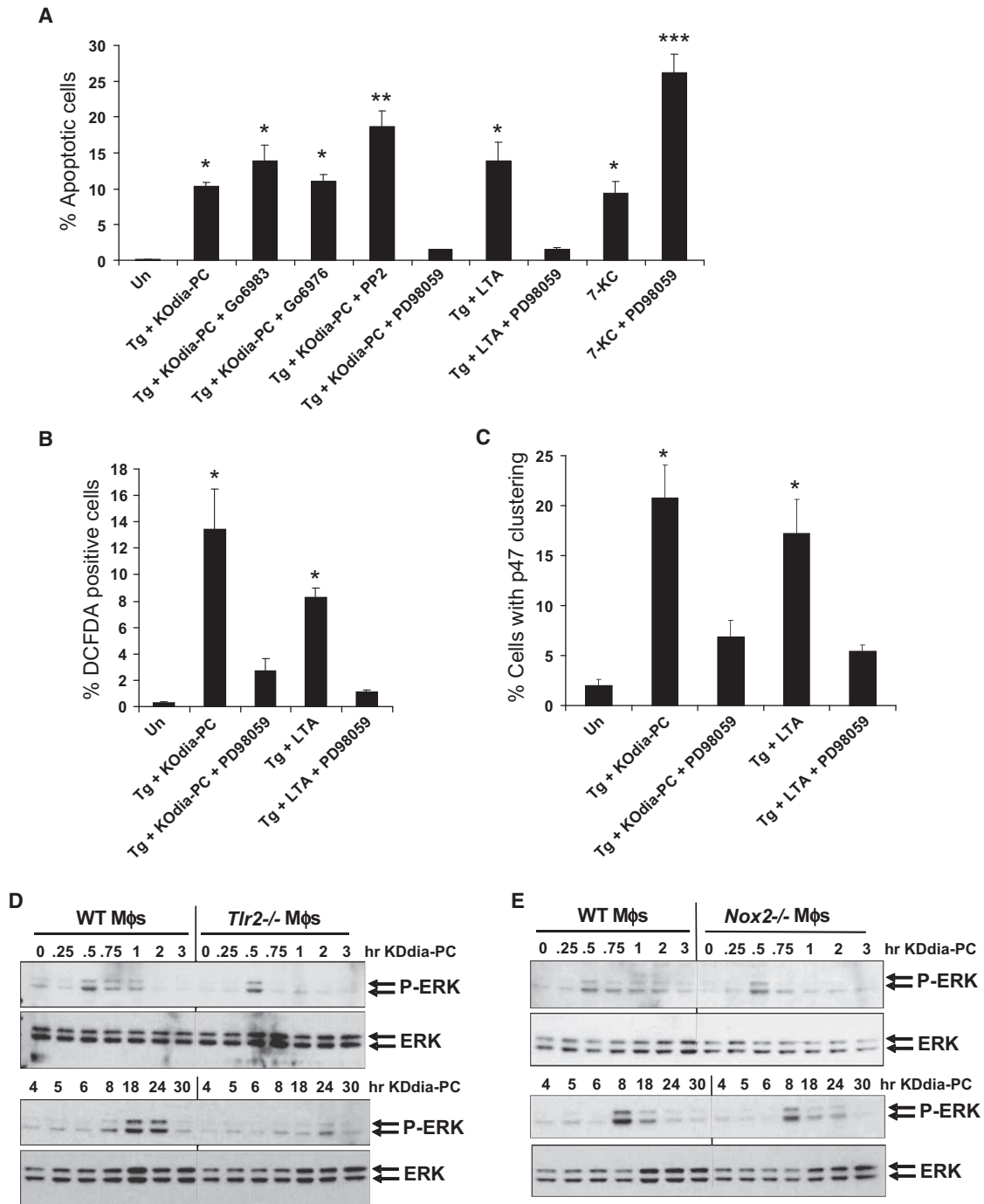


Figure 5. TLR2-Dependent ERK Activation Promotes Apoptosis, ROS Generation, and p47^{phox} Clustering

(A–C) Macrophages were left untreated (Un) or incubated for 24 hr with the ER stressors thapsigargin or 7-ketocholesterol, alone or in combination with KOdia-PC or LTA. Some of the samples were pretreated for 1 hr with 250 nM of the conventional or pan-PKC inhibitors Go6976 and Go6983, respectively, 10 μM of the Src-like kinase inhibitor PP2, or 10 μM of the MEK1 inhibitor PD98059. The cells were then analyzed for apoptosis (A), DCF positivity (B), or p47^{phox} clustering (C). (D and E) Macrophages from WT, *Nox2*^{-/-}, or *Tlr2*^{-/-} mice were incubated with KDdia-PC alone for the indicated times. Cell lysates were then immunoblotted for Thr202/Tyr204-phospho-ERK1/2 and total ERK. Differences between values with symbols and no symbols or between values with different symbols are statistically significant ($p < 0.05$).

in combination with thapsigargin. Although SFAs can induce ER stress under certain conditions (Borradaile et al., 2006; Erbay et al., 2009), we found that proapoptotic CHOP was not induced

in macrophages from the SFA-fed mice and was not increased above the thapsigargin-alone level in macrophages from SFA/thapsigargin-treated mice (data not shown). Using the TUNEL

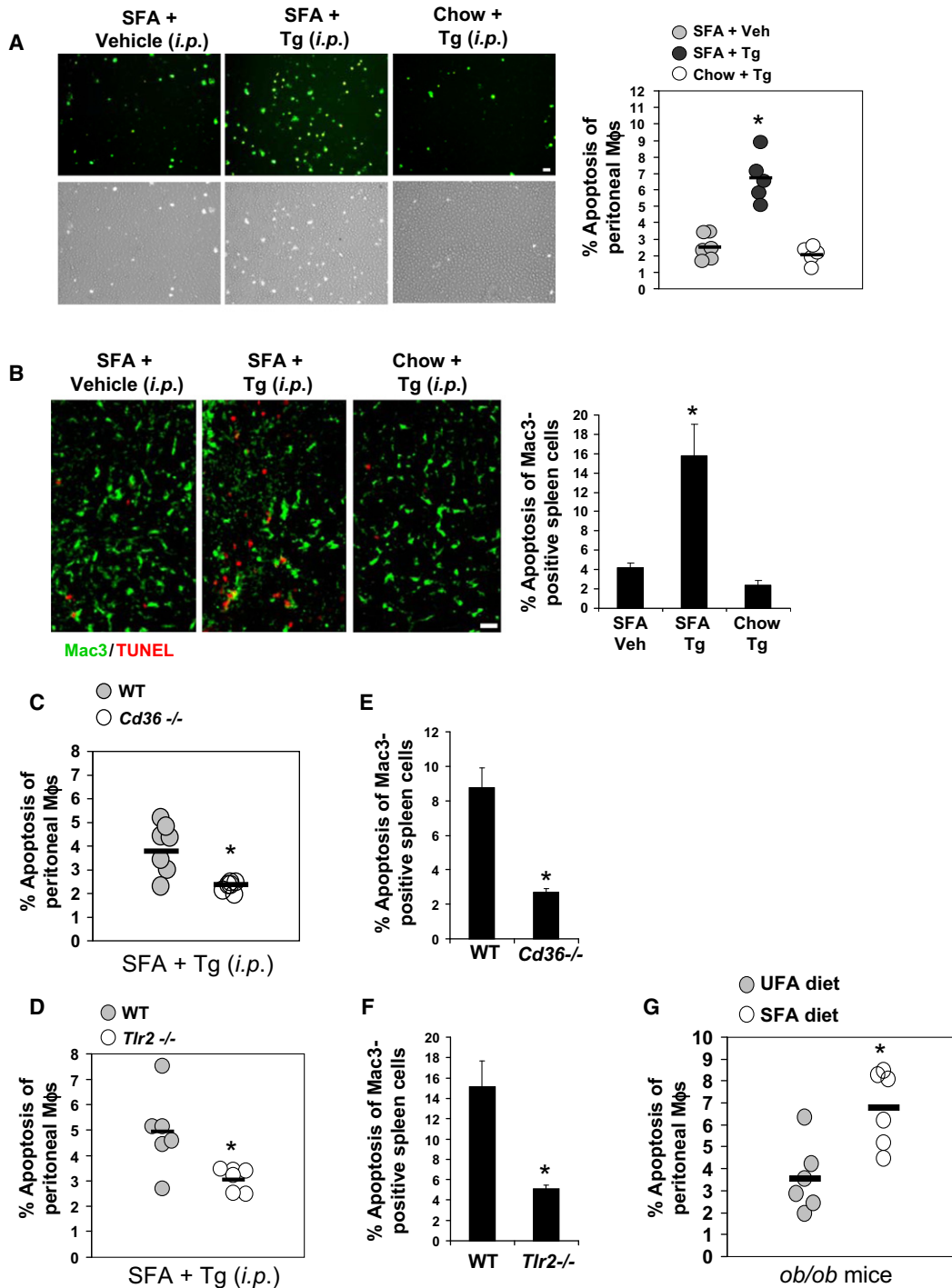


Figure 6. SFAs Trigger CD36- and TLR2-Dependent Macrophage Apoptosis In Vivo

(A and B) Mice were fed a regular chow diet or a diet containing saturated fatty acids (SFAs) for 2 weeks. Concanavalin A was administered i.p., and 2 days later the mice were given an i.p. injection of 150 mM dextrose (vehicle) or 0.4 mg/kg thapsigargin (Tg) in dextrose. Macrophages were harvested from the peritoneum 24 hr later and stained immediately with Alexa 488 annexin V and propidium iodide (A). Representative fluorescent and bright-field images are shown. The dot plot shows the quantified data for each individual mouse, which was obtained from five individual fields/mouse. The horizontal line represents the mean in each group (**p* < 0.05). Splens harvested from these mice were sectioned and stained for the macrophage marker Mac3 (green) and for apoptosis by TUNEL (red) (B) (bar, 10 μ m; **p* < 0.05).

(C–F) WT, *Cd36*^{-/-}, and *Tlr2*^{-/-} mice were fed a SFA-rich diet for 2 weeks and then treated with thapsigargin as described above. Peritoneal macrophages (C and D) and splenic macrophages (E and F) were then assayed for apoptosis.

(G) *ob/ob* mice were fed a diet rich in SFAs or unsaturated fatty acids (UFAs) for 2 weeks, and then freshly isolated peritoneal macrophages were assayed for apoptosis. The horizontal lines in (C), (D), and (G) represent the mean value in each group (**p* < 0.05).

assay, apoptosis was also quantified in splenic macrophages from the same groups of mice. As shown in Figure 6B, a marked increase in apoptosis of Mac3-positive splenic macrophages was observed in ER-stressed mice fed the SFA diet but not in those fed the chow diet.

To determine whether the increase in apoptosis observed in vivo was dependent on CD36 and/or TLR2, WT, *Cd36*^{-/-}, and *Tlr2*^{-/-} mice were compared in the above experimental protocol. Peritoneal and splenic macrophages were protected from apoptosis in both CD36-deficient and TLR2-deficient mice (Figures 6C–6F). To test SFA-induced apoptosis in a physiologic model of ER stress, we used the leptin-deficient *ob/ob* model, a model of ER stress and insulin resistance whose macrophages undergo a low level of ER stress in vivo (C.-P. Liang, S. Han, G. Li, T. Senokuchi, I.T., and A.R. Tall, unpublished data) (Li et al., 2009). Apoptosis in peritoneal cavity macrophages was determined in *ob/ob* mice fed either the aforementioned SFA diet or a calorically matched safflower oil diet rich in the UFAs, which are relatively weak inducers of apoptosis (see Figure 1H). SFA- and UFA-treated mice had similar weights and plasma glucose and insulin levels, and the macrophages harvested from the two groups of mice showed similar induction of iNOS by LPS (data not shown). As shown in Figure 6G, apoptosis was significantly higher in the *ob/ob* mice fed the SFA diet. Thus, the level of ER stress that occurs in *ob/ob* mice is enough to trigger SFA-induced macrophage apoptosis in the absence of an exogenous ER stressor.

TLR2/4 Deficiency Suppresses Advanced Lesional Macrophage Apoptosis and Plaque Necrosis in *Ldlr*^{-/-} Mice

We have previously shown that *ApoE*^{-/-} mice with a combined deficiency of SRA and CD36 are protected from advanced lesional macrophage apoptosis and plaque necrosis (Manning-Tobin et al., 2009). Importantly, plaque necrosis was not decreased in atherosclerosis models with deficiencies of SRA alone or CD36 alone (T.A.S., K.J.M., and I.T., unpublished data), indicating that both pathways of apoptosis need to be eliminated before effects are observed. Because fat-fed *Ldlr*^{-/-} mice transplanted with bone marrow from mice deficient in TLR4 alone also did not demonstrate an effect on advanced plaques (T.A.S. and I.T., unpublished data), and because CD36 requires TLR2 while SRA requires TLR4 (Seimon et al., 2006), we determined whether combined deficiency of TLR2 and TLR4 suppresses advanced lesional macrophage apoptosis in a mouse model of atherosclerosis. Note that while a number of studies have shown roles for TLR2 and TLR4 in early atherogenesis (Michelsen et al., 2004; Mullick et al., 2008), their involvement in the key process of advanced plaque progression, specifically plaque necrosis, has not been examined. Thus, *Ldlr*^{-/-} mice were reconstituted with WT or *Tlr2*^{-/-}*Tlr4*^{-/-} bone marrow and then placed on a western-type diet for 10 weeks. The two groups of mice showed no statistically significant difference in body weight (data not shown); total plasma cholesterol, HDL, and triglycerides; or FPLC lipoprotein profile (Figure 7A). Aortic root lesion area, which would not necessarily be altered by processes affecting advanced lesional macrophage apoptosis, was modestly decreased in the TLR2/4-deficient group, but the difference was not statistically significant (Figure 7B).

In contrast, there was a statistically significant 45% decrease in percent necrotic area in the *Tlr2*^{-/-}*Tlr4*^{-/-} → *Ldlr*^{-/-} lesions. Plaque necrosis arises as a consequence of advanced lesion macrophage apoptosis (Tabas, 2005; Schrijvers et al., 2007). We therefore assessed the effect of TLR2/TLR4 deficiency on lesional macrophage apoptosis using TUNEL and activated caspase-3 staining. As shown in Figures 7C and 7D, there was an approximately 60% decrease in TUNEL positivity and a 75% decrease in activated caspase-3 staining in *Tlr2*^{-/-}*Tlr4*^{-/-} → *Ldlr*^{-/-} lesions. The majority of the TUNEL-positive cells colocalized with the macrophage marker Mac3, as assessed by immunofluorescence microscopy (Figure S2). Thus, combined TLR2 and TLR4 deficiency in bone-marrow-derived cells of *Ldlr*^{-/-} mice is partially protective against macrophage apoptosis and plaque necrosis in advanced atherosclerosis.

DISCUSSION

The vast majority of atherosclerotic lesions, even those that are relatively large, are clinically silent (Libby, 2000). Rather, acute atherothrombotic vascular disease, the leading cause of death in the industrialized world, is caused by a very small minority of lesions that are characterized not by large lesion volume but by plaque necrosis, plaque disruption, and susceptibility to acute thrombosis (Libby, 2000; Virmani et al., 2003). This report provides evidence in vitro and in vivo that a pathway involving the pattern recognition receptors CD36 and TLR2/6 plays an important role in a critical process leading to plaque necrosis, namely, the triggering of apoptosis in ER-stressed macrophages (Figure S3). Although these pattern recognition receptors have been implicated previously in very different processes related to early atherogenesis (below), their role in the late lesional event of apoptosis in ER-stressed macrophages provides a link from these receptors to the completely distinct and clinically relevant process of plaque necrosis. Moreover, these studies have revealed the surprising and fascinating finding that Lp(a), an oxPL-carrying lipoprotein specifically associated with acute atherothrombosis through an unknown mechanism, is a potent stimulator of this CD36-TLR2 apoptosis pathway in ER-stressed macrophages.

While this is the first study to examine the role of CD36 and TLR2 in processes related specifically to plaque necrosis, other studies have examined their roles in early atherogenesis. For example, several studies have shown that SRA and/or CD36 deficiency protects mice from macrophage foam cell formation in mouse models of atherosclerosis, although the magnitude of this effect can be quite modest and shows dependence on the level of oxLDL-associated CD36 ligands induced by certain diets (Silverstein, 2009; Zhao et al., 2005; Manning-Tobin et al., 2009; Kennedy et al., 2009). CD36 has also been implicated in macrophage trapping in lesions (Park et al., 2009). Similarly, a number of previous studies have examined the role of TLR2 on atherogenic processes relevant mostly to early lesion development (Mullick et al., 2005, 2008; Liu et al., 2008). These studies have revealed that endogenous TLR2 ligands may be acting primarily on endothelial cells, while exogenous ligands exert their effect on macrophages (Mullick et al., 2005). Of interest, one study linked TLR2 to activation of NF-κB and the induction of inflammatory cytokines and matrix metalloproteases (MMPs) in mixed

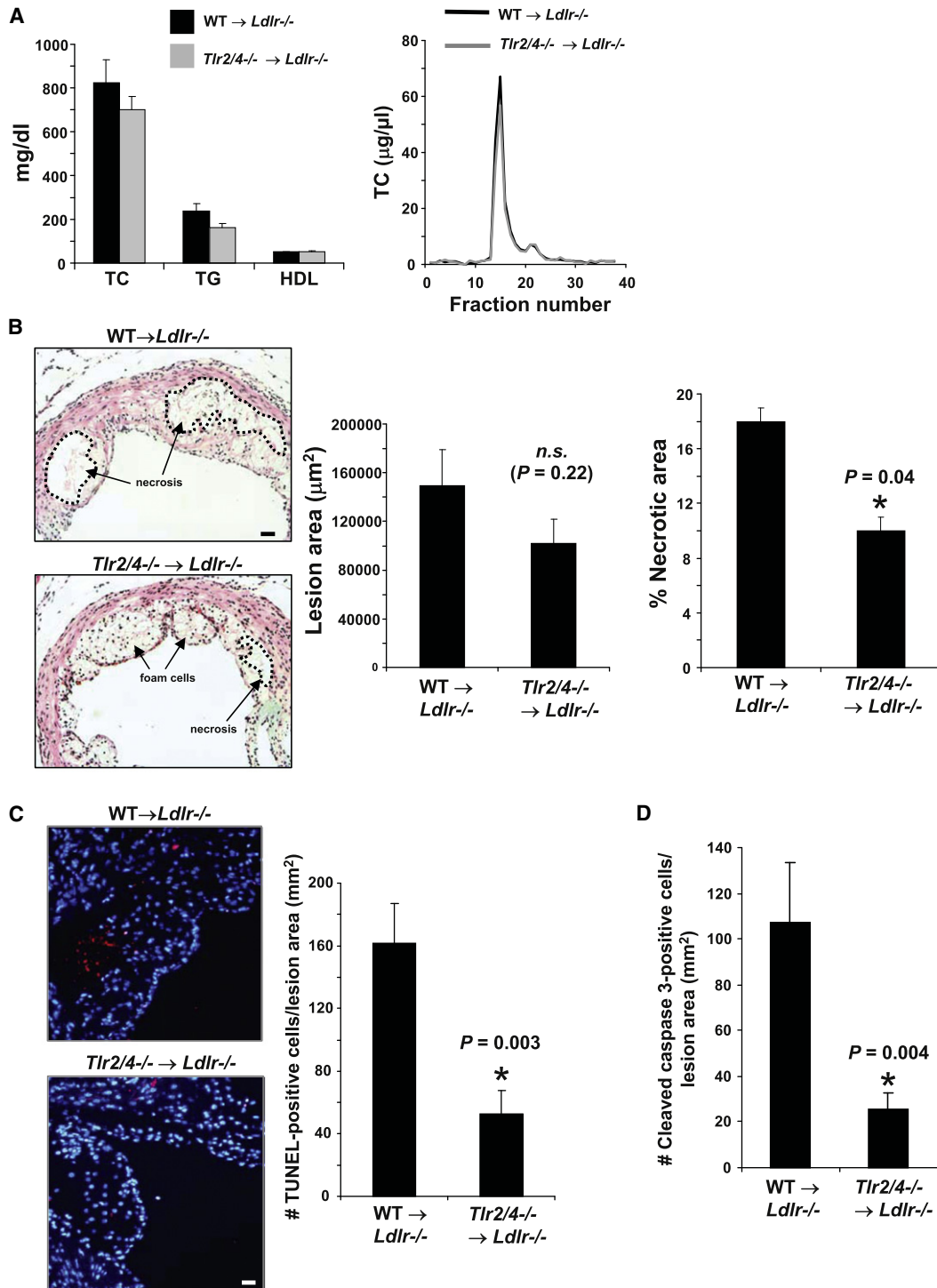


Figure 7. TLR2/4 Deficiency in Bone-Marrow-Derived Cells Suppresses Apoptosis and Plaque Necrosis in Advanced Aortic Root Lesions of Fat-Fed *Ldlr*^{-/-} Mice

(A) *Ldlr*^{-/-} mice were transplanted with *Tlr2*^{+/+}*Tlr4*^{+/+} (WT) or *Tlr2*^{-/-}*Tlr4*^{-/-} bone marrow and then fed a western-type diet for 10 weeks starting 4 weeks after transplantation. Plasma cholesterol, triacylglycerol, HDL, and FPLC lipoprotein profiles of the two groups of mice are shown in (A). There were no statistical differences between the two groups in any of the values.

(B–D) Images and quantification of lesion area and percent necrotic area (n = 10 and n = 9), percent of TUNEL-positive cells (n = 10 and n = 7), and percent activated caspase-3-positive cells (n = 8 and n = 9) in the lesions of *Ldlr*^{-/-} mice transplanted with bone marrow from WT and *Tlr4*^{-/-}*Tlr2*^{-/-} mice, respectively. Hematoxylin and eosin staining of the sections is shown in (B) with the necrotic area outlined (dotted black lines), and (C) shows TUNEL (red) and DAPI (blue) staining. The p values shown in (B)–(D) were derived from the Mann-Whitney test. Bars in (B) and (C), 20 and 15 μm, respectively.

vascular cells cultured from human carotid atherectomy specimens (Monaco et al., 2009). If future in vivo studies provide evidence for TLR2-induced inflammation and MMP induction in advanced lesions in vivo, these actions of TLR2 would complement the proapoptotic role for TLR2 revealed here in terms of advanced plaque progression.

The identity of the molecular components on oxPLs, including oxPLs associated with Lp(a)/apo(a), that activate the CD36-TLR2/6 pathway remains to be fully elucidated. Our data thus far suggest that with free oxPLs, the *sn2* oxidized fatty acid is a required element, but in view of our data showing that free SFAs and dipalmitoyl PC can trigger the pathway, it may work in concert with the *sn1* SFA of oxPLs. However, the situation with the oxPLs associated with apo(a) is likely to be different if the *sn2* oxidized fatty acid is covalently bound to the protein, as suggested by previous work (Edelstein et al., 2003; Bergmark et al., 2008). In this case, the *sn1* SFA may play a critical role, perhaps in concert with the phosphocholine head group. Another area for future investigation is to determine why oxPL internalization is necessary to trigger apoptosis in ER-stressed macrophages (Figure S5) and how this process might work in concert with cell-surface signaling through CD36 and/or TLR2/6 heterodimer.

The role of SFAs in the apoptosis pathway described here is an important finding both mechanistically and because of its potential relevance to obesity and insulin resistance. SFAs have been reported to directly stimulate TLR signaling (Shi et al., 2006; Senn, 2006; Nguyen et al., 2007), but these findings have recently been challenged by a study showing LPS contamination in the BSA used to complex the SFAs (Eridge and Samani, 2009). Contamination of BSA with TLR activators cannot account for the ability of SFAs to trigger apoptosis in ER-stressed macrophages, because LPS in our model does not serve as a second TLR hit for apoptosis in ER-stressed macrophages (Seimon et al., 2006), and the proapoptotic effect of fatty acids in the current study was TLR4 independent. Moreover, the SFA-free BSA control did not trigger macrophage apoptosis when combined with thapsigargin, and SFAs were much more potent in inducing apoptosis than unsaturated FAs, which were also complexed with BSA. In addition to activating TLRs, SFAs can directly trigger proapoptotic ER stress (Wei et al., 2006), which likely accounts for the residual level of TLR2-independent macrophage death we observed with SFAs in the absence of thapsigargin (Figure 1H). In this regard, a recent study showed that SFAs at a dose of 500 μ M alone can cause ER stress-induced macrophage death through a pathway mediated by adipocyte-binding protein-4 (aP2), a cytosolic lipid chaperone that is also expressed in macrophages (Erbay et al., 2009). However, our in vivo studies with *ob/ob* and *Ldlr*^{-/-} mice suggest that the TLR-dependent pathway of macrophage death revealed herein is relevant to pathological settings in which ER stress is present.

As mentioned above, our study may provide insight into how Lp(a) contributes to atherothrombotic vascular disease. Lp(a) is an independent risk factor for CAD, but the mechanism underlying this observation is not known (Tréguoët et al., 2009; Brazier et al., 1999; Holmer et al., 2003; Bergmark et al., 2008; Erqou et al., 2009). Recent insight was provided by the finding that Lp(a) functions as a carrier of PC-containing oxPLs (Bergmark

et al., 2008), and we show here that oxPL-containing Lp(a) and apo(a) can trigger apoptosis in ER-stressed macrophages in a CD36-, TLR2/6-, ROS-, and *sn2* fatty acid-dependent manner. These findings may explain a report in 1994 showing that Lp(a) can induce oxidative stress in monocytes (Riis Hansen et al., 1994), although no mechanism was reported. Relevant to a role for Lp(a) in ER stress-induced macrophage apoptosis, transgenic hyperlipidemic rabbits with modest plasma levels of Lp(a) have a marked increase in plaque necrosis without a change in plasma lipids or en face lesion area compared with nontransgenic WHHL rabbits (Sun et al., 2002). This finding is consistent with the association between high plasma levels of Lp(a) and acute coronary syndromes. Thus, our findings raise the possibility of a specific cellular mechanism linking elevated plasma Lp(a) to advanced plaque progression and consequent atherothrombotic vascular disease.

The ultimate goal of studies on advanced plaque progression in general and advanced lesional macrophage apoptosis in particular is to suggest therapeutic strategies that specifically block the progression of the 2%–3% of total human atherosclerotic lesions that actually cause acute atherothrombotic vascular disease. If one were to focus on interrupting the proximal components of the pathway described herein, i.e., CD36 or TLR2, lesional targeting would likely be required for specificity in view of the widespread role of these receptors in normal physiology and host defense. A further therapeutic clue from the data herein may come from the critical role of prolonged oxidative stress. On the one hand, we show here that ER stress is needed for prolongation of this response per se, and recent work using chemical chaperones to suppress ER stress has suggested potential promise of this approach in the setting of atherosclerosis (Erbay et al., 2009). The initial oxidant burst itself, which is triggered by a TLR2-NADPH oxidase pathway, is also a possible target through NADPH oxidase inhibitors (Yu et al., 2008) or antioxidants that partially suppress the response but do not compromise its role in host defense. The fact that vitamin E is not useful in preventing human cardiovascular disease may be due to the fact that it does not adequately target the specific types and mechanisms of oxidative stress that are key to plaque progression (Williams and Fisher, 2005). Indeed, the protective actions of NAC in our cell culture model of ER stress-induced macrophage apoptosis were not found with doses of vitamin E that have antioxidant actions in other settings (G. Li and I.T., unpublished data). Of interest in this regard, NAC has been shown recently to suppress atherosclerosis in fat-fed *Apoe*^{-/-} mice (Shimada et al., 2009). These types of findings and therapeutic strategizing provide strong rationale for understanding in depth the cellular and molecular mechanisms that specifically promote advanced plaque progression.

EXPERIMENTAL PROCEDURES

Animals and Diets

The following mice were purchased from Jackson Laboratory (Bar Harbor, ME): C57BL/6J, *Tlr2*^{-/-} (strain B6.129 *Tlr2*^{tm1Klr/J}) backcrossed to the C57BL/6J background, TLR4-deficient (strain C57BL/10ScNJ), *Nox2*^{-/-} (strain B6.129S6-Cybb^{tm1Din/J}), *Ldlr*^{-/-} (B6.129S7-Ldlr^{tm1Her/J}), and *ob/ob* (B6.V-Lep^{ob/J}). The *Myd88*^{-/-}, *Sra*^{-/-} (*Msr*^{-/-})*Cd36*^{-/-}, *Tlr4*^{-/-}, *Tlr1*^{-/-}, and *Tlr6*^{-/-} mice were generated as described previously (Seimon et al., 2006; Moore et al., 2005; Adachi et al., 1998; Hoshino et al., 1999; Takeuchi et al.,

2002). For the atherosclerosis study, *Tlr2*^{-/-} and *Tlr4*^{-/-} mice were crossed to generate *Tlr2*^{-/-}*Tlr4*^{-/-} mice as donors. Macrophages from female 8- to 10-week-old C57BL/6J mice were used as WT controls in all experiments. The SFA and UFA diets were purchased from Research Diets, Inc. (New Brunswick, NJ). Both the SFA diet (formula #D06040503) and UFA diet (formula #D09021101) were matched for caloric content and contain 20% protein and 70% carbohydrate. The SFA diet contains 3.5% cocoa butter (43% palmitic and stearic acids, 40% oleic and linoleic acids). The UFA diet contains 3.5% safflower oil (10% palmitic and stearic acids, 76% oleic and linoleic acids). For the atherosclerosis study, male mice at 14 weeks of age and 4 weeks after the bone marrow transplant were placed on a western-type diet (TD88137, Harlan Teklad; Madison, WI) for 10 weeks.

Bone Marrow Transplantation

Ten-week-old male *Ldlr*^{-/-} mice were lethally irradiated using a cesium γ source at a dose of 1000 rad 4–6 hr before transplantation. Bone marrow cells were collected from the femurs and tibias of donor WT and *Tlr2*^{-/-}*Tlr4*^{-/-} mice by flushing with sterile medium as described previously (Lim et al., 2008). All animal procedures used in this study followed Columbia University's institutional guidelines.

Macrophage Staining of Mouse Spleen Sections and Atherosclerotic Lesions

Specimens were immersion-fixed in 10% neutral-buffered formalin (for spleens) or 1% paraformaldehyde in PBS (for hearts) overnight, followed by paraffin embedding. Sections (7 μ M) on glass slides were deparaffinized in xylene and hydrated in water. Antigen retrieval was obtained by exposing the slides to 1 mM EDTA (pH 8) in a steamer for 20 min. The sections were permeabilized with 0.1% Triton X-100 and then incubated with anti-Mac3 antibody overnight, followed by incubation with a biotinylated anti-rat IgG and then streptavidin-conjugated Alexa 488-labeled antibody. Sections were stained for TUNEL as described below, followed by counterstaining with DAPI to identify nuclei.

Apoptosis Assays

Apoptosis was assayed in cultured macrophages by staining with Alexa 488-conjugated annexin V (green) and propidium iodide (PI, red) as described previously (Devries-Seimon et al., 2005). Apoptotic cells in tissues were labeled by TUNEL using the In Situ Cell Death Detection Kit TMR red (Roche Diagnostics) according to the manufacturer's protocol. Only TUNEL-positive cells that colocalized with DAPI-stained nuclei and Mac3 were counted as being positive. TUNEL and annexin staining were viewed using an Olympus IX70 inverted fluorescent microscope. Representative fields (4–6 fields containing ~1000 cells) were photographed using an Olympus DP71 CCD camera. The number of annexin V- and PI-positive cells was counted and expressed as a percent of the total number of cells in at least four separate fields from duplicate wells. For TUNEL analysis, DAPI, TUNEL, and/or Mac3 images were merged using Photoshop analysis software (Adobe Systems). The number of cells positive for TUNEL, DAPI, and Mac3 (in spleen sections only) was counted in two fields from each mouse and expressed as the percentage of total Mac3-positive cells in the image. Activated caspase-3 staining was performed using the SignalStain Cleaved Caspase-3 (Asp175) IHC detection kit according to the manufacturer's protocol (Cell Signaling Technology; Danvers, MA).

p47^{phox} Clustering Assay

Macrophages were plated at 50% confluency and treated the following day, as indicated in the figure legends. The media were removed, and the cells were incubated for 10 min at 37°C with 50 nM LysoTracker Green DND25 in PBS. The cells were then rinsed with PBS twice, fixed in 4% paraformaldehyde in PBS for 20 min, rinsed again, and permeabilized using 0.5% Triton X-100 in PBS for 5 min. The permeabilized cells were incubated for 60 min in 5% normal goat serum and then overnight at 4°C with a rabbit anti-p47^{phox} primary antibody. The cells were rinsed, stained with a goat anti-rabbit Alexa Fluor 594-labeled secondary antibody, and counterstained with DAPI to identify the nuclei. The number of cells exhibiting clustering was quantified from four independent fields of view and expressed as the percent of the total population.

Atherosclerotic Lesion Analysis

For morphometric lesion analysis, sections were stained with Harris' hematoxylin and eosin (H&E). The total lesion area and necrotic area was quantified as previously described (Seimon et al., 2009). For plaque necrosis, boundary lines were drawn around regions that were free of H&E staining, and area measurements were obtained using image analysis software (Seimon et al., 2009). A 3000 μ m² threshold was implemented in order to avoid counting regions that likely do not represent substantial areas of necrosis. Using this method, a 97% agreement in the percent necrotic area was calculated between our two independent observers.

SUPPLEMENTAL INFORMATION

Supplemental Information includes Supplemental Experimental Procedures, Supplemental References, and three figures and can be found with this article online at doi:10.1016/j.cmet.2010.09.010.

ACKNOWLEDGMENTS

This work was supported by an American Heart Association Scientist Development Grant (0735594T) to T.A.S. and an AHA Student Scholarship in Cardiovascular Disease and Stroke to M.N. The work was also supported by NIH grants HL087123 and HL075662 to I.T.; GM069338 (LIPID MAPS) to R.H., J.L.W., and S.T.; AG020255 and AG032349 to K.J.M.; GM54060 to D.G.; a T32 postdoctoral training grant (HL007343) to M.J.N.; and Summer Research Training Grant to M.N. Other support includes US Army Medical Research and Materiel Command grant W81XWH-06-1-0212 to I.T. and the Fondation Leducq to J.L.W. and S.T. M.L.K. is a Career Investigator, Heart and Stroke Foundation of Ontario. We would like to thank Nancy Webb (University of Kentucky) for providing the DN-Dynamin adenoviral construct and Alan Tall for helpful advice during the course of this project.

Received: March 31, 2010

Revised: July 9, 2010

Accepted: August 2, 2010

Published: November 2, 2010

REFERENCES

- Adachi, O., Kawai, T., Takeda, K., Matsumoto, M., Tsutsui, H., Sakagami, M., Nakanishi, K., and Akira, S. (1998). Targeted disruption of the MyD88 gene results in loss of IL-1- and IL-18-mediated function. *Immunity* 9, 143–150.
- Bergmark, C., Dewan, A., Orsoni, A., Merki, E., Miller, E.R., Shin, M.J., Binder, C.J., Hökkö, S., Krauss, R.M., Chapman, M.J., et al. (2008). A novel function of lipoprotein [a] as a preferential carrier of oxidized phospholipids in human plasma. *J. Lipid Res.* 49, 2230–2239.
- Bey, E.A., Xu, B., Bhattacharjee, A., Oldfield, C.M., Zhao, X., Li, Q., Subbulakshmi, V., Feldman, G.M., Wientjes, F.B., and Cathcart, M.K. (2004). Protein kinase C delta is required for p47^{phox} phosphorylation and translocation in activated human monocytes. *J. Immunol.* 173, 5730–5738.
- Borradaile, N.M., Han, X., Harp, J.D., Gale, S.E., Ory, D.S., and Schaffer, J.E. (2006). Disruption of endoplasmic reticulum structure and integrity in lipotoxic cell death. *J. Lipid Res.* 47, 2726–2737.
- Boullier, A., Friedman, P., Harkewicz, R., Hartvigsen, K., Green, S.R., Almazan, F., Dennis, E.A., Steinberg, D., Witztum, J.L., and Quehenberger, O. (2005). Phosphocholine as a pattern recognition ligand for CD36. *J. Lipid Res.* 46, 969–976.
- Braunwald, E. (1997). Shattuck lecture—cardiovascular medicine at the turn of the millennium: triumphs, concerns, and opportunities. *N. Engl. J. Med.* 337, 1360–1369.
- Brazier, L., Tiret, L., Luc, G., Arveiler, D., Ruidavets, J.B., Evans, A., Chapman, J., Cambien, F., and Thillet, J. (1999). Sequence polymorphisms in the apolipoprotein(a) gene and their association with lipoprotein(a) levels and myocardial infarction. The ECTIM Study. *Atherosclerosis* 144, 323–333.
- Devries-Seimon, T., Li, Y., Yao, P.M., Stone, E., Wang, Y., Davis, R.J., Flavell, R., and Tabas, I. (2005). Cholesterol-induced macrophage apoptosis requires

- ER stress pathways and engagement of the type A scavenger receptor. *J. Cell Biol.* **171**, 61–73.
- Dewas, C., Fay, M., Gougerot-Pocidallo, M.A., and El-Benna, J. (2000). The mitogen-activated protein kinase extracellular signal-regulated kinase 1/2 pathway is involved in formyl-methionyl-leucyl-phenylalanine-induced p47phox phosphorylation in human neutrophils. *J. Immunol.* **165**, 5238–5244.
- Dickhout, J.G., Hossain, G.S., Pozza, L.M., Zhou, J., Lhoták, S., and Austin, R.C. (2005). Peroxynitrite causes endoplasmic reticulum stress and apoptosis in human vascular endothelium: implications in atherogenesis. *Arterioscler. Thromb. Vasc. Biol.* **25**, 2623–2629.
- Edelstein, C., Pfaffinger, D., Hinman, J., Miller, E., Lipkind, G., Tsimikas, S., Bergmark, C., Getz, G.S., Witztum, J.L., and Scanu, A.M. (2003). Lysine-phosphatidylcholine adducts in kringle V impart unique immunological and potential pro-inflammatory properties to human apolipoprotein(a). *J. Biol. Chem.* **278**, 52841–52847.
- Endemann, G., Stanton, L.W., Madden, K.S., Bryant, C.M., White, R.T., and Protter, A.A. (1993). CD36 is a receptor for oxidized low density lipoprotein. *J. Biol. Chem.* **268**, 11811–11816.
- Erbay, E., Babaev, V.R., Mayers, J.R., Makowski, L., Charles, K.N., Snitow, M.E., Fazio, S., Wiest, M.M., Watkins, S.M., Linton, M.F., and Hotamisligil, G.S. (2009). Reducing endoplasmic reticulum stress through a macrophage lipid chaperone alleviates atherosclerosis. *Nat. Med.* **15**, 1383–1391.
- Erqou, S., Kaptoge, S., Perry, P.L., Di Angelantonio, E., Thompson, A., White, I.R., Marcovina, S.M., Collins, R., Thompson, S.G., and Danesh, J.; Emerging Risk Factors Collaboration. (2009). Lipoprotein(a) concentration and the risk of coronary heart disease, stroke, and nonvascular mortality. *JAMA* **302**, 412–423.
- Erridge, C., and Samani, N.J. (2009). Saturated fatty acids do not directly stimulate Toll-like receptor signaling. *Arterioscler. Thromb. Vasc. Biol.* **29**, 1944–1949.
- Feng, B., Yao, P.M., Li, Y., Devlin, C.M., Zhang, D., Harding, H.P., Sweeney, M., Rong, J.X., Kuriakose, G., Fisher, E.A., et al. (2003). The endoplasmic reticulum is the site of cholesterol-induced cytotoxicity in macrophages. *Nat. Cell Biol.* **5**, 781–792.
- Feric, N.T., Boffa, M.B., Johnston, S.M., and Koschinsky, M.L. (2008). Apolipoprotein(a) inhibits the conversion of Glu-plasminogen to Lys-plasminogen: a novel mechanism for lipoprotein(a)-mediated inhibition of plasminogen activation. *J. Thromb. Haemost.* **6**, 2113–2120.
- Frank, J., Biesalski, H.K., Dominici, S., and Pompella, A. (2000). The visualization of oxidant stress in tissues and isolated cells. *Histol. Histopathol.* **15**, 173–184.
- Gargalovic, P.S., Gharavi, N.M., Clark, M.J., Pagnon, J., Yang, W.P., He, A., Truong, A., Baruch-Oren, T., Berliner, J.A., Kirchgessner, T.G., and Lusis, A.J. (2006). The unfolded protein response is an important regulator of inflammatory genes in endothelial cells. *Arterioscler. Thromb. Vasc. Biol.* **26**, 2490–2496.
- Greenberg, M.E., Li, X.M., Gugiu, B.G., Gu, X., Qin, J., Salomon, R.G., and Hazen, S.L. (2008). The lipid whisker model of the structure of oxidized cell membranes. *J. Biol. Chem.* **283**, 2385–2396.
- Hazzard, W.R., and Ettinger, W.H., Jr. (1995). Aging and atherosclerosis: changing considerations in cardiovascular disease prevention as the barrier to immortality is approached in old age. *Am. J. Geriatr. Cardiol.* **4**, 16–36.
- Hoebe, K., Georgel, P., Rutschmann, S., Du, X., Mudd, S., Crozat, K., Sovath, S., Shamel, L., Hartung, T., Zähringer, U., and Beutler, B. (2005). CD36 is a sensor of diacylglycerides. *Nature* **433**, 523–527.
- Holmer, S.R., Hengstenberg, C., Kraft, H.G., Mayer, B., Pöll, M., Kürzinger, S., Fischer, M., Löwel, H., Klein, G., Riegger, G.A., and Schunkert, H. (2003). Association of polymorphisms of the apolipoprotein(a) gene with lipoprotein (a) levels and myocardial infarction. *Circulation* **107**, 696–701.
- Hoshino, K., Takeuchi, O., Kawai, T., Sanjo, H., Ogawa, T., Takeda, Y., Takeda, K., and Akira, S. (1999). Cutting edge: Toll-like receptor 4 (TLR4)-deficient mice are hyporesponsive to lipopolysaccharide: evidence for TLR4 as the Lps gene product. *J. Immunol.* **162**, 3749–3752.
- Hu, P., Han, Z., Couvillon, A.D., and Exton, J.H. (2004). Critical role of endogenous Akt/IAPs and MEK1/ERK pathways in counteracting endoplasmic reticulum stress-induced cell death. *J. Biol. Chem.* **279**, 49420–49429.
- Ibrahimi, A., and Abumrad, N.A. (2002). Role of CD36 in membrane transport of long-chain fatty acids. *Curr. Opin. Clin. Nutr. Metab. Care* **5**, 139–145.
- Kennedy, D.J., Kuchibhotla, S.D., Guy, E., Park, Y.M., Nimako, G., Vanegas, D., Morton, R.E., and Febbraio, M. (2009). Dietary cholesterol plays a role in CD36-mediated atherogenesis in LDLR-knockout mice. *Arterioscler. Thromb. Vasc. Biol.* **29**, 1481–1487.
- Kenny, E.F., and O'Neill, L.A. (2008). Signalling adaptors used by Toll-like receptors: an update. *Cytokine* **43**, 342–349.
- Koschinsky, M.L., and Marcovina, S.M. (2004). Structure-function relationships in apolipoprotein(a): insights into lipoprotein(a) assembly and pathogenicity. *Curr. Opin. Lipidol.* **15**, 167–174.
- Koschinsky, M.L., Tomlinson, J.E., Zioncheck, T.F., Schwartz, K., Eaton, D.L., and Lawn, R.M. (1991). Apolipoprotein(a): expression and characterization of a recombinant form of the protein in mammalian cells. *Biochemistry* **30**, 5044–5051.
- Laroux, F.S., Romero, X., Wetzler, L., Engel, P., and Terhorst, C. (2005). Cutting edge: MyD88 controls phagocyte NADPH oxidase function and killing of gram-negative bacteria. *J. Immunol.* **175**, 5596–5600.
- Lee, J.Y., and Hwang, D.H. (2006). The modulation of inflammatory gene expression by lipids: mediation through Toll-like receptors. *Mol. Cells* **21**, 174–185.
- Li, G., Mongillo, M., Chin, K.T., Harding, H., Ron, D., Marks, A.R., and Tabas, I. (2009). Role of ERO1- α -mediated stimulation of inositol 1,4,5-triphosphate receptor activity in endoplasmic reticulum stress-induced apoptosis. *J. Cell Biol.* **186**, 783–792.
- Libby, P. (2000). Changing concepts of atherogenesis. *J. Intern. Med.* **247**, 349–358.
- Lim, W.S., Timmins, J.M., Seimon, T.A., Sadler, A., Kolodgie, F.D., Virmani, R., and Tabas, I. (2008). Signal transducer and activator of transcription-1 is critical for apoptosis in macrophages subjected to endoplasmic reticulum stress in vitro and in advanced atherosclerotic lesions in vivo. *Circulation* **117**, 940–951.
- Liu, X., Ukai, T., Yumoto, H., Davey, M., Goswami, S., Gibson, F.C., 3rd, and Genco, C.A. (2008). Toll-like receptor 2 plays a critical role in the progression of atherosclerosis that is independent of dietary lipids. *Atherosclerosis* **196**, 146–154.
- Lloyd-Jones, D., Adams, R.J., Brown, T.M., Carnethon, M., Dai, S., De Simone, G., Ferguson, T.B., Ford, E., Furie, K., Gillespie, C., et al. (2010). Executive summary: heart disease and stroke statistics—2010 update: a report from the American Heart Association. *Circulation* **121**, 948–954.
- Manning-Tobin, J.J., Moore, K.J., Seimon, T.A., Bell, S.A., Sharuk, M., Alvarez-Leite, J.I., de Winther, M.P., Tabas, I., and Freeman, M.W. (2009). Loss of SR-A and CD36 activity reduces atherosclerotic lesion complexity without abrogating foam cell formation in hyperlipidemic mice. *Arterioscler. Thromb. Vasc. Biol.* **29**, 19–26.
- Michelsen, K.S., Wong, M.H., Shah, P.K., Zhang, W., Yano, J., Doherty, T.M., Akira, S., Rajavashisth, T.B., and Arditi, M. (2004). Lack of Toll-like receptor 4 or myeloid differentiation factor 88 reduces atherosclerosis and alters plaque phenotype in mice deficient in apolipoprotein E. *Proc. Natl. Acad. Sci. USA* **101**, 10679–10684.
- Miller, Y.I., Worrall, D.S., Funk, C.D., Feramisco, J.R., and Witztum, J.L. (2003). Actin polymerization in macrophages in response to oxidized LDL and apoptotic cells: role of 12/15-lipoxygenase and phosphoinositide 3-kinase. *Mol. Biol. Cell* **14**, 4196–4206.
- Monaco, C., Gregan, S.M., Navin, T.J., Foxwell, B.M., Davies, A.H., and Feldmann, M. (2009). Toll-like receptor-2 mediates inflammation and matrix degradation in human atherosclerosis. *Circulation* **120**, 2462–2469.
- Moore, K.J., Kunjathoor, V.V., Koehn, S.L., Manning, J.J., Tseng, A.A., Silver, J.M., McKee, M., and Freeman, M.W. (2005). Loss of receptor-mediated lipid uptake via scavenger receptor A or CD36 pathways does not ameliorate atherosclerosis in hyperlipidemic mice. *J. Clin. Invest.* **115**, 2192–2201.

- Mullick, A.E., Tobias, P.S., and Curtiss, L.K. (2005). Modulation of atherosclerosis in mice by Toll-like receptor 2. *J. Clin. Invest.* *115*, 3149–3156.
- Mullick, A.E., Soldau, K., Kiosses, W.B., Bell, T.A., 3rd, Tobias, P.S., and Curtiss, L.K. (2008). Increased endothelial expression of Toll-like receptor 2 at sites of disturbed blood flow exacerbates early atherogenic events. *J. Exp. Med.* *205*, 373–383.
- Myoishi, M., Hao, H., Minamino, T., Watanabe, K., Nishihira, K., Hatakeyama, K., Asada, Y., Okada, K., Ishibashi-Ueda, H., Gabbiani, G., et al. (2007). Increased endoplasmic reticulum stress in atherosclerotic plaques associated with acute coronary syndrome. *Circulation* *116*, 1226–1233.
- Nguyen, M.T., Favelyukis, S., Nguyen, A.K., Reichart, D., Scott, P.A., Jenn, A., Liu-Bryan, R., Glass, C.K., Neels, J.G., and Olefsky, J.M. (2007). A subpopulation of macrophages infiltrates hypertrophic adipose tissue and is activated by free fatty acids via Toll-like receptors 2 and 4 and JNK-dependent pathways. *J. Biol. Chem.* *282*, 35279–35292.
- Nilsen, N.J., Deininger, S., Nonstad, U., Skjeldal, F., Husebye, H., Rodionov, D., von Aulock, S., Hartung, T., Lien, E., Bakke, O., and Espevik, T. (2008). Cellular trafficking of lipoteichoic acid and Toll-like receptor 2 in relation to signaling: role of CD14 and CD36. *J. Leukoc. Biol.* *84*, 280–291.
- Oka, K., Sawamura, T., Kikuta, K., Itokawa, S., Kume, N., Kita, T., and Masaki, T. (1998). Lectin-like oxidized low-density lipoprotein receptor 1 mediates phagocytosis of aged/apoptotic cells in endothelial cells. *Proc. Natl. Acad. Sci. USA* *95*, 9535–9540.
- Pålsson-McDermott, E.M., and O'Neill, L.A. (2007). The potential of targeting Toll-like receptor 2 in autoimmune and inflammatory diseases. *Ir. J. Med. Sci.* *176*, 253–260.
- Park, Y.M., Febbraio, M., and Silverstein, R.L. (2009). CD36 modulates migration of mouse and human macrophages in response to oxidized LDL and may contribute to macrophage trapping in the arterial intima. *J. Clin. Invest.* *119*, 136–145.
- Pedrucci, E., Guichard, C., Ollivier, V., Driss, F., Fay, M., Prunet, C., Marie, J.C., Pouzet, C., Samadi, M., Elbim, C., et al. (2004). NAD(P)H oxidase Nox-4 mediates 7-ketocholesterol-induced endoplasmic reticulum stress and apoptosis in human aortic smooth muscle cells. *Mol. Cell. Biol.* *24*, 10703–10717.
- Podrez, E.A., Poliakov, E., Shen, Z., Zhang, R., Deng, Y., Sun, M., Finton, P.J., Shan, L., Gugiu, B., Fox, P.L., et al. (2002). Identification of a novel family of oxidized phospholipids that serve as ligands for the macrophage scavenger receptor CD36. *J. Biol. Chem.* *277*, 38503–38516.
- Riis Hansen, P., Kharazmi, A., Jauhainen, M., and Ehnholm, C. (1994). Induction of oxygen free radical generation in human monocytes by lipoprotein(a). *Eur. J. Clin. Invest.* *24*, 497–499.
- Schrijvers, D.M., De Meyer, G.R., Herman, A.G., and Martinet, W. (2007). Phagocytosis in atherosclerosis: Molecular mechanisms and implications for plaque progression and stability. *Cardiovasc. Res.* *73*, 470–480.
- Seimon, T.A., Obstfeld, A., Moore, K.J., Golenbock, D.T., and Tabas, I. (2006). Combinatorial pattern recognition receptor signaling alters the balance of life and death in macrophages. *Proc. Natl. Acad. Sci. USA* *103*, 19794–19799.
- Seimon, T.A., Wang, Y., Han, S., Senokuchi, T., Schrijvers, D.M., Kuriakose, G., Tall, A.R., and Tabas, I.A. (2009). Macrophage deficiency of p38alpha MAPK promotes apoptosis and plaque necrosis in advanced atherosclerotic lesions in mice. *J. Clin. Invest.* *119*, 886–898.
- Senn, J.J. (2006). Toll-like receptor-2 is essential for the development of palmitate-induced insulin resistance in myotubes. *J. Biol. Chem.* *281*, 26865–26875.
- Shi, H., Kokoeva, M.V., Inouye, K., Tzameli, I., Yin, H., and Flier, J.S. (2006). TLR4 links innate immunity and fatty acid-induced insulin resistance. *J. Clin. Invest.* *116*, 3015–3025.
- Shimada, K., Murayama, T., Yokode, M., Kita, T., Uzui, H., Ueda, T., Lee, J.D., and Kishimoto, C. (2009). N-acetylcysteine reduces the severity of atherosclerosis in apolipoprotein E-deficient mice by reducing superoxide production. *Circ. J.* *73*, 1337–1341.
- Silverstein, R.L. (2009). Inflammation, atherosclerosis, and arterial thrombosis: role of the scavenger receptor CD36. *Cleve. Clin. J. Med.* *76* (Suppl 2), S27–S30.
- Sim, S., Yong, T.S., Park, S.J., Im, K.I., Kong, Y., Ryu, J.S., Min, D.Y., and Shin, M.H. (2005). NADPH oxidase-derived reactive oxygen species-mediated activation of ERK1/2 is required for apoptosis of human neutrophils induced by *Entamoeba histolytica*. *J. Immunol.* *174*, 4279–4288.
- Simon, H.U., Haj-Yehia, A., and Levi-Schaffer, F. (2000). Role of reactive oxygen species (ROS) in apoptosis induction. *Apoptosis* *5*, 415–418.
- Stuart, L.M., Deng, J., Silver, J.M., Takahashi, K., Tseng, A.A., Hennessy, E.J., Ezekowitz, R.A., and Moore, K.J. (2005). Response to *Staphylococcus aureus* requires CD36-mediated phagocytosis triggered by the COOH-terminal cytoplasmic domain. *J. Cell Biol.* *170*, 477–485.
- Sun, H., Unoki, H., Wang, X., Liang, J., Ichikawa, T., Arai, Y., Shiomi, M., Marcovina, S.M., Watanabe, T., and Fan, J. (2002). Lipoprotein(a) enhances advanced atherosclerosis and vascular calcification in WHHL transgenic rabbits expressing human apolipoprotein(a). *J. Biol. Chem.* *277*, 47486–47492.
- Sun, B., Boyanovsky, B.B., Connelly, M.A., Shridas, P., van der Westhuyzen, D.R., and Webb, N.R. (2007). Distinct mechanisms for OxLDL uptake and cellular trafficking by class B scavenger receptors CD36 and SR-BI. *J. Lipid Res.* *48*, 2560–2570.
- Tabas, I. (2005). Consequences and therapeutic implications of macrophage apoptosis in atherosclerosis: the importance of lesion stage and phagocytic efficiency. *Arterioscler. Thromb. Vasc. Biol.* *25*, 2255–2264.
- Takeuchi, O., Sato, S., Horiuchi, T., Hoshino, K., Takeda, K., Dong, Z., Modlin, R.L., and Akira, S. (2002). Cutting edge: role of Toll-like receptor 1 in mediating immune response to microbial lipoproteins. *J. Immunol.* *169*, 10–14.
- Thorp, E., Li, G., Seimon, T.A., Kuriakose, G., Ron, D., and Tabas, I. (2009). Reduced apoptosis and plaque necrosis in advanced atherosclerotic lesions of *ApoE*^{-/-} and *Ldlr*^{-/-} mice lacking CHOP. *Cell Metab.* *9*, 474–481.
- Touyz, R.M., Yao, G., and Schiffrin, E.L. (2003). c-Src induces phosphorylation and translocation of p47phox: role in superoxide generation by angiotensin II in human vascular smooth muscle cells. *Arterioscler. Thromb. Vasc. Biol.* *23*, 981–987.
- Trégouët, D.A., König, I.R., Erdmann, J., Munteanu, A., Braund, P.S., Hall, A.S., Grosshennig, A., Linsel-Nitschke, P., Perret, C., DeSuremain, M., et al; Wellcome Trust Case Control Consortium; Cardiogenics Consortium. (2009). Genome-wide haplotype association study identifies the SLC22A3-LPAL2-LPA gene cluster as a risk locus for coronary artery disease. *Nat. Genet.* *41*, 283–285.
- Virmani, R., Burke, A.P., Kolodgie, F.D., and Farb, A. (2003). Pathology of the thin-cap fibroatheroma: a type of vulnerable plaque. *J. Interv. Cardiol.* *16*, 267–272.
- Wei, Y., Wang, D., Topczewski, F., and Pagliassotti, M.J. (2006). Saturated fatty acids induce endoplasmic reticulum stress and apoptosis independently of ceramide in liver cells. *Am. J. Physiol. Endocrinol. Metab.* *291*, E275–E281.
- Williams, K.J., and Fisher, E.A. (2005). Oxidation, lipoproteins, and atherosclerosis: which is wrong, the antioxidants or the theory? *Curr. Opin. Clin. Nutr. Metab. Care* *8*, 139–146.
- Yu, J., Weiwer, M., Linhardt, R.J., and Dordick, J.S. (2008). The role of the methoxyphenol apocynin, a vascular NADPH oxidase inhibitor, as a chemopreventive agent in the potential treatment of cardiovascular diseases. *Curr. Vasc. Pharmacol.* *6*, 204–217.
- Zhao, Z., de Beer, M.C., Cai, L., Asmis, R., de Beer, F.C., de Villiers, W.J., and van der Westhuyzen, D.R. (2005). Low-density lipoprotein from apolipoprotein E-deficient mice induces macrophage lipid accumulation in a CD36 and scavenger receptor class A-dependent manner. *Arterioscler. Thromb. Vasc. Biol.* *25*, 168–173.
- Zhou, J., Lhoták, S., Hilditch, B.A., and Austin, R.C. (2005). Activation of the unfolded protein response occurs at all stages of atherosclerotic lesion development in apolipoprotein E-deficient mice. *Circulation* *111*, 1814–1821.